



RM Series

RM Device Finder User Guide

Table of Contents

Introduction	3
What is "RM Device Finder"?	3
Conventions Used in This Guide	3
Software Operating Environment	3
Target Models.	4
Connection Diagram and Features.	5
Computer Network Settings	6
Installing and Starting "RM Device Finder"	7
Installing "RM Device Finder".	7
Starting "RM Device Finder"	7
"RM Device Finder" Screen	8
"Select Network Interface Card" Screen	8
"RM Device Finder" Main Screen	9
"Device search by IP address" Screen	11
"Firmware Update" Screen	13
Updating the Firmware	15
Using the Divide/Combine Room Feature.	16
"Divide / Combine Room Wizard".	16
"Preset Recall" Screen	25
Assigning Functions to CTL-BN1	26
"CTL-BN1 Configuration Settings" Screen.	27

Introduction

This document provides details on using the "RM Device Finder" application software (version 2.9.0 or later), compatible with all RM series devices.

What is "RM Device Finder"?

"RM Device Finder" is an application that detects RM series devices on the network and opens the device's Web GUI "Device Manager" in a web browser. It can also be used to review the setup of the Divide/Combine Room feature (preset settings to divide/combine multiple rooms) and the preset switching as well as to specify settings for CTL-BN1 (controller).

Conventions Used in This Guide

Trademarks

- Dante is a registered trademark of Audinate.
- Windows is a registered trademark of Microsoft Corporation in the United States and other countries.
- Other company names and product names mentioned in this document are trademarks or registered trademarks of their respective corporate owners.

Content

- All copyrights relating to this software and User Guide are owned by Yamaha Corporation.
- This software and User Guide must not be modified in whole or in part without permission.
- We assume no responsibility whatsoever for any consequences or subsequent impacts resulting from the use of this software or User Guide.
- For the purpose of improvement, this software and User Guide are subject to change without prior notice.
- This software is not guaranteed to work with a Windows touchscreen.
- The illustrations and screens in this User Guide are for instructional purposes only.
- The operation and screen examples provided in this User Guide are based on Windows 10.

Software Operating Environment

This software runs on Windows.

OS	Windows 10, Windows 11
-----------	------------------------

Must be able to run .NET Framework 4.5.2 or later



NOTE

Some computers may have requirements that exceed the recommended environment. Refer to the Yamaha website for up-to-date information on the latest software versions and operating requirements.

Yamaha website:
<https://download.yamaha.com>

Target Models

In order to take full advantage of the features of "RM Device Finder" version 2.0.0.0 or later, the firmware version of your device must meet the following requirements. Use RM Device Finder to update the device firmware to the latest version.

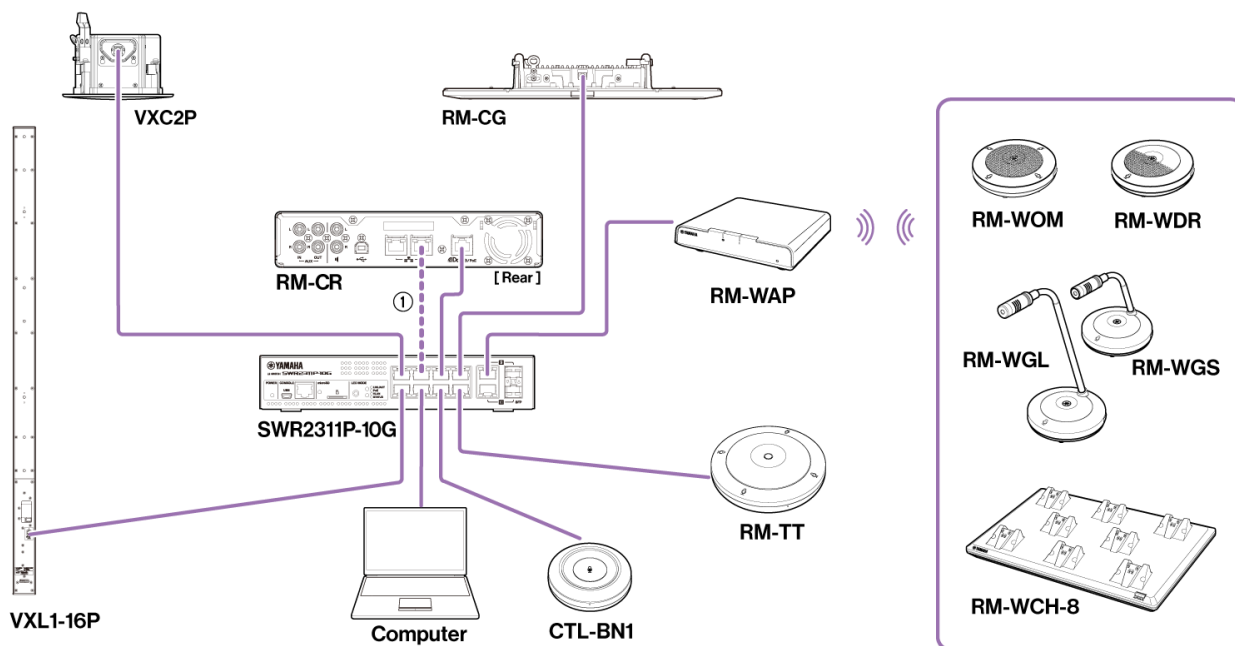
Model	Version
RM-CR	1.0.1 or later
RM-CG	1.0.1 or later
RM-TT	1.1.0 or later
RM-WAP16	1.8.3 or later
RM-WAP8	1.8.0 or later
VXL1-16P	1.1.0 or later
VXC2P	2.8.0 or later
CTL-BN1	2.8.0 or later

**NOTE**

- In order to use the Divide/Combine Room feature, firmware compatible with ADECIA version 2.0.0 or later is required.
- In order to update the VXL1-16P Dante module, firmware compatible with ADECIA version 2.5.0 or later is required.
- In order to assign functions to CTL-BN1, firmware compatible with ADECIA version 2.8.0 or later is required.

Connection Diagram and Features

This section shows an example of how to connect devices and describes the features supported by "RM Device Finder".



Connection ① is required if the following conditions are met at the same time.



NOTE

- [ETHERNET SWITCH SETTINGS] in the Web GUI "RM-CR Device Manager" is set to [Separated].
- RM-CR's [Dante] and [Corporate] ports are set to the same IP segment.

Function	RM-CR RM-CG RM-TT	RM-WAP	RM-WCH	RM-WOM *1	VXC2P VXL1-16P	CTL-BN1
Device detection	✓	✓	—	—	✓	✓
Web GUI startup	✓	✓	—	—	—	—
Firmware update	✓	✓	*2	*2	✓	✓
Divide/Combine Room feature setup	✓	✓	*3	*3	✓	✓
Preset switching review	✓	✓	*3	*3	✓	✓
CTL-BN1 function assignment	—	—	—	—	—	✓

*1: Four models: RM-WOM, RM-WDR, RM-WGL, RM-WGS

*2: Perform from the Web GUI "RM-WAP Device Manager", started from "RM Device Finder"

*3: In accordance with the RM-WAP settings

Computer Network Settings

By default, the RM series network is automatically configured with DHCP. If there is no DHCP server in the network, the IP address is automatically specified in Auto IP mode.

If you want to manually configure the network or set the RM series network to connect to and coexist with an existing network, specify the settings to match the LAN to be connected to. Consult with your LAN administrator for details.

Computer TCP/IP Settings

Specify your computer's TCP/IP settings if you want to manually configure the network or set the RM series network to connect to and coexist with an existing network. Follow the steps below to adjust the settings.

1. **Open the "Control Panel", and then click [Network and Sharing Center] or [View network status and tasks].**

"Network and Sharing Center" appears.

2. **In "Network and Sharing Center", click [Change adapter settings], and then double-click [Local Area Connection].**

The "Local Area Connection Status" dialog box appears.

If the "Local Area Connection Properties" dialog box appears, go to step 4.

3. **Click [Properties].**

The "Local Area Connection Properties" dialog box appears.

4. **Select [Internet Protocol Version 4 (TCP/IPv4)], and then click [Properties].**

The "Internet Protocol Version 4 (TCP/IPv4) Properties" dialog box appears.

5. **Select [Use the following IP address (S)].**

6. **Type the IP address of your computer beside [IP address], the subnet mask for the subnet to be connected to beside [Subnet mask], and the IP address of the gateway beside [Default gateway].**

If you want to set the RM series network to coexist with an existing network, ask your LAN administrator for details.

7. **Click [OK].**
8. **Restart your computer.**

Installing and Starting "RM Device Finder"

Installing "RM Device Finder"

Download and install the "RM Device Finder" installation file to your PC.

1. Download the latest version of the installation software from the Yamaha website.

Yamaha website:

<https://download.yamaha.com>

2. Extract the compressed file and install the application software.

- ① Extract the zip file and open it in the desired location.
- ② Double click the file "RMDeviceFinderInstaller.exe" in the folder.
- ③ Install the application by following the instructions in the Installer.

Starting "RM Device Finder"

Start "RM Device Finder" using one of the methods below.

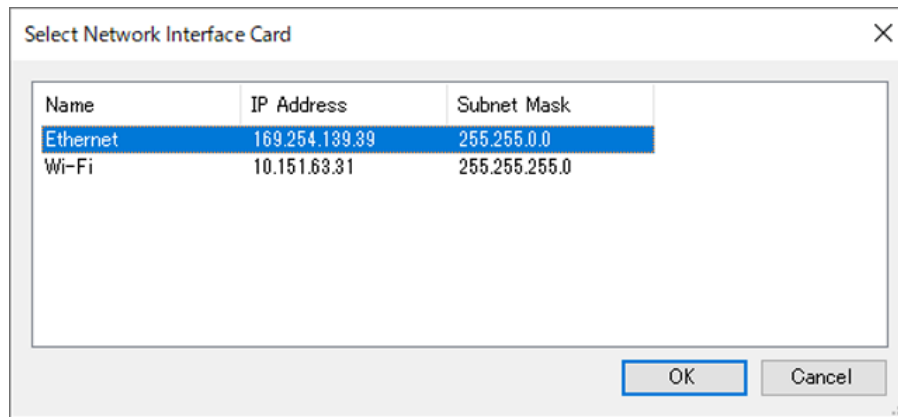
- Double click the "RM Device Finder" shortcut icon
(if you checked the [Create a desktop shortcut] option on the Install screen)
- Select the program from your Windows Start icon

The "[Select Network Interface Card](#)" screen appears when "RM Device Finder" is started.

"RM Device Finder" Screen

"Select Network Interface Card" Screen

This screen allows you to select a network interface card. It appears when "RM Device Finder" is started. From the list, select one of the network interface cards in the RM series, and then click the [OK] button.



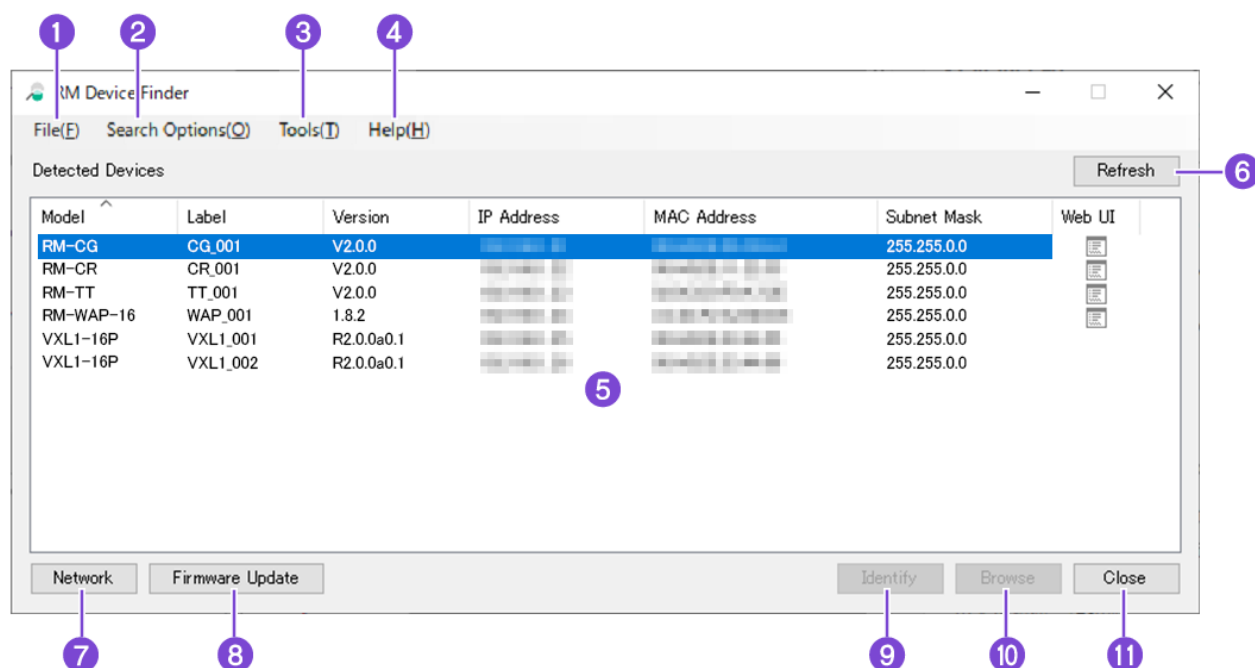
Click the [OK] button to display the "RM Device Finder" main screen.



NOTE

You can also display the "Select Network Interface Card" screen by clicking the [Network] button (6) in the "RM Device Finder" main screen.

"RM Device Finder" Main Screen



1 [File] menu

[Firmware Update]

Displays the "Firmware Update" screen (for updating device firmware).

For details, refer to ["Firmware Update" screen](#).

You can also display the "Firmware Update" screen using the following method:

- Click the [Firmware Update] button (7).

[Exit]

Closes the application.

You can also close the application using the following methods:

- Click the [x] button in the corner of the screen.
- Click the [Close] button (11).

2 [Search Options] menu

[Search by IP address]

Uses TCP to detect a device with a specified IP address.

For details, refer to ["Device search by IP address" screen](#).

[Search by file]

Imports a list of detected devices from a CSV file.

[Save device file]

Exports the list of detected devices to a CSV file.

2 [Tools] menu

[Preset Recall]

Displays the "Preset Recall" screen (for recalling presets).

[Divide/Combine Room Wizard]

Displays the "Divide/Combine Room Wizard" screen (for specifying divide/combine settings for multiple rooms).

For details on [Preset Recall] and [Divide/Combine Room Wizard], refer to [Using the Divide/Combine Room Feature](#).

[CTL-BN1 Configuration Settings]

Displays the "CTL-BN1 Configuration Settings" screen (for assigning functions to CTL-BN1).

3 [Help] menu**[About]**



Displays the application name and version number.

[Legal]

Displays the license information for the open-source software used in this application.

4 "Detected Devices" list

Lists information on detected devices.

Select a device with the  [Web UI] icon, and then click the [Browse] button to open the device's Web GUI "Device Manager" in a web browser. You can also open the device's Web GUI "Device Manager" by double-clicking the row of a device with the  [Web UI] icon.

**NOTE**

- The web browser used to open the device's Web GUI "Device Manager" depends on your computer's settings.
- No [Web UI] icon appears if the model does not have a Web GUI "Device Manager".
- Only RM series devices with network support are displayed.

5 [Refresh] button

Clears the list and detects devices again.

If no valid network interface card is selected, the [Refresh] button is grayed out and cannot be clicked.

(After it has been clicked, the button cannot be clicked again for 5 seconds.)

6 [Network] button

Displays the "Select Network Interface Card" screen (for selecting a network interface card).

The "Select Network Interface Card" screen also appears when the application is started.

For details, refer to ["Select Network Interface Card" screen](#).

7 [Firmware Update] button

Displays the "Firmware Update" screen (for updating device firmware).

For details, refer to ["Firmware Update" screen](#).

8 [Identify] button

Causes the indicator of the device selected in the list to flash for 5 seconds. Used to identify equipment.

9 [Browse] button

Opens (in a web browser) the Web GUI "Device Manager" for the device selected in the list.

10 [Close] button

Closes the application.

You can also close the application using the following methods:

- Click [File] (1), then [Exit].
- Click the [x] button in the corner of the screen.

"Device search by IP address" Screen

Using TCP, a device with the specified IP address can be detected. This allows you to search for multiple devices on different networks as well as update the firmware for devices in remote locations. In order to use this function, display the "Device search by IP address" screen by using the provided menu path.

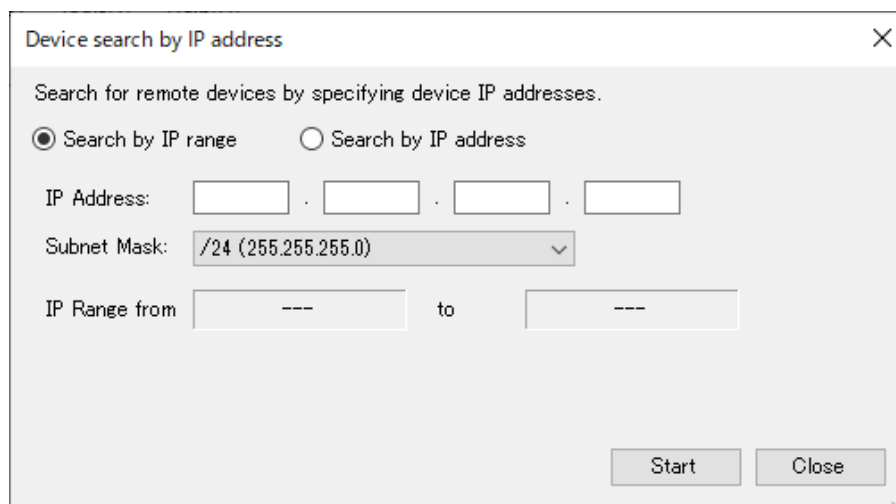
[Search Options] → [Search by IP address]

There are two ways to specify an IP address.

- * Search by IP range
- * Search by IP address

Search by IP range

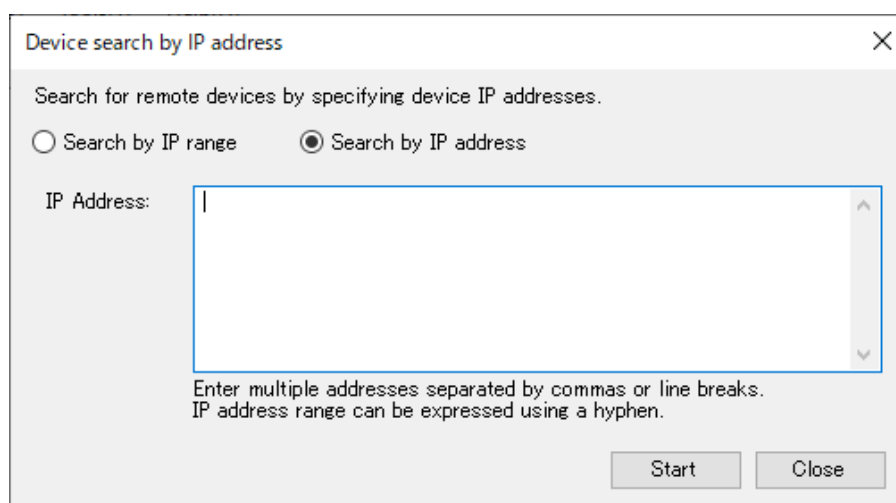
You can specify a range by entering an IP address and subnet mask.



The screenshot shows the "Device search by IP address" dialog box. The title bar includes a close button (X). The main text says "Search for remote devices by specifying device IP addresses." Below this, there are two radio buttons: "Search by IP range" (which is selected) and "Search by IP address". The "IP Address:" field is composed of four separate input boxes for the octets of the IP address. The "Subnet Mask:" field is a dropdown menu currently showing "/24 (255.255.255.0)". The "IP Range from" field is followed by a "to" label and another empty input box. At the bottom right, there are "Start" and "Close" buttons.

Search by IP address

You can specify multiple IP addresses by separating them with commas or line breaks, or you can specify a range of IP addresses by connecting them with a hyphen.



The screenshot shows the "Device search by IP address" dialog box. The title bar includes a close button (X). The main text says "Search for remote devices by specifying device IP addresses." Below this, there are two radio buttons: "Search by IP range" and "Search by IP address" (which is selected). The "IP Address:" field is a large text area with a vertical scrollbar. Below the text area, there is a note: "Enter multiple addresses separated by commas or line breaks. IP address range can be expressed using a hyphen." At the bottom right, there are "Start" and "Close" buttons.

Clicking the [Start] button in the screen shown above displays the following screen and starts the device search.

Device search by IP address

Searching for devices...

IP Address:

IP Address	Model	Label	Version	Status	
192.168.0.33				Login required to proceed	Login...
192.168.0.34				Login required to proceed	Login...
192.168.0.35				Login required to proceed	Login...
192.168.0.39				Login required to proceed	Login...
192.168.0.40				Login required to proceed	Login...
192.168.0.41				Login required to proceed	Login...
192.168.0.42				Login required to proceed	Login...
192.168.0.43				Login required to proceed	Login...
192.168.0.44				Login required to proceed	Login...
192.168.0.45				Login required to proceed	Login...
192.168.0.46				Login required to proceed	Login...
192.168.0.66	RM-WAP-8	Y042-Yamaha-RM-WAP-8-...	3.0.2		

You must log in to any device where a [Login...] button appears.
Click the [Login...] button, and then type the password in the screen that appears (shown below).

Login

RM-Series Device Manager

Hostname: IP Address:

Login:

When the search is finished, click the [Close] button to close the "Device search by IP address" screen and update the "Detected Devices" list in the "RM Device Finder" main screen.

RM Device Finder

File(F) Search Options(O) Tools(T) Help(H)

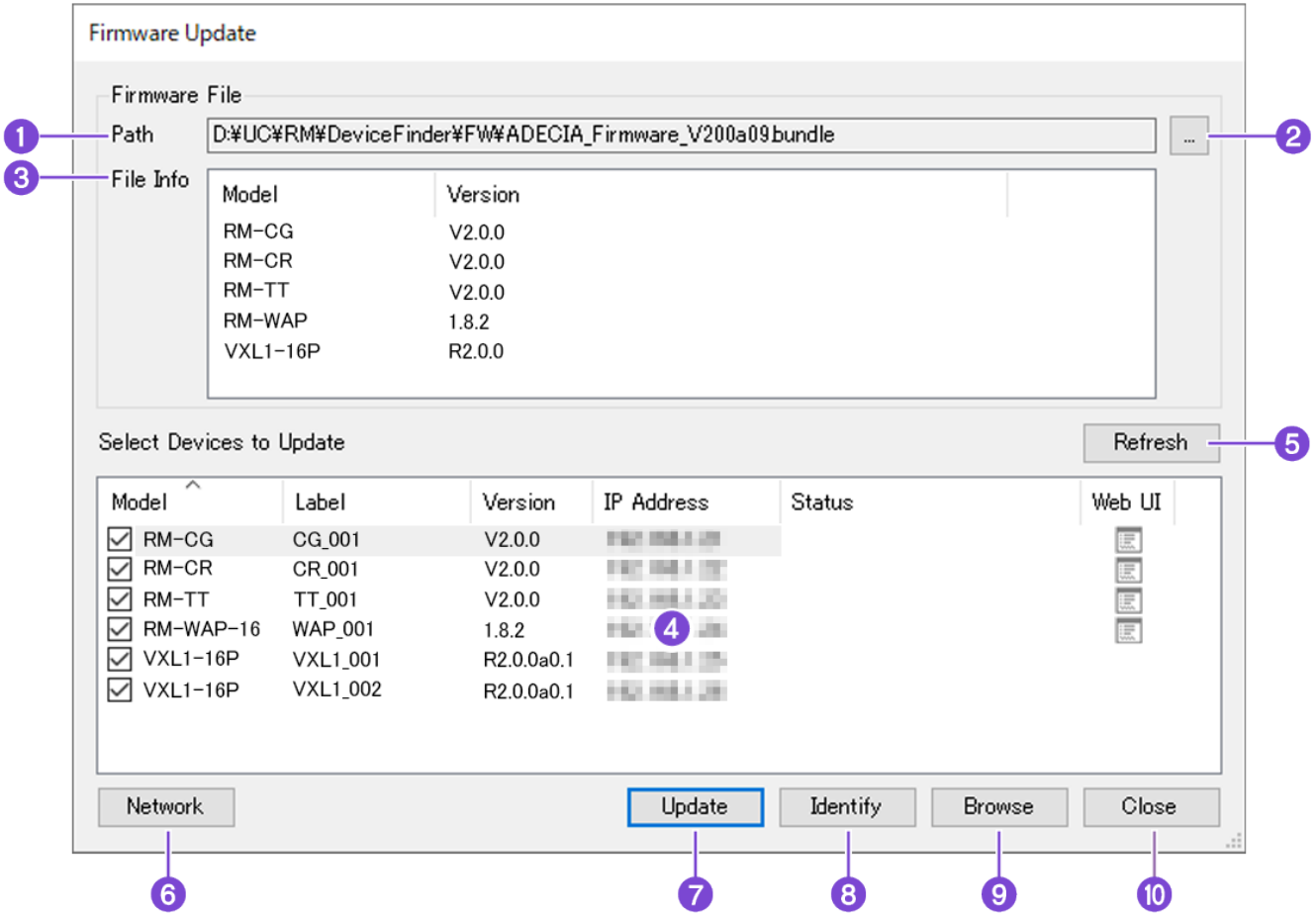
Detected Devices

Model	Label	Version	IP Address	MAC Address	Subnet Mask	Web UI
CTL-BN1	Y052-Yamaha...	R3.0.0a0.0	192.168.0.82	00:00:00:00:00:00	255.255.255.255	
CTL-BN1	Y053-Yamaha...	R3.0.0a0.0	192.168.0.83	00:00:00:00:00:00	255.255.255.255	
CTL-BN1	Y054-Yamaha...	R3.0.0a0.0	192.168.0.84	00:00:00:00:00:00	255.255.255.255	
RM-CG	Y021-Yamaha...	V3.0.0	192.168.0.33	F4:D5:80:12:9C:B5	255.255.255.0	
RM-CG	Y022-Yamaha...	V3.0.0	192.168.0.34	F4:D5:80:12:9C:E2	255.255.255.0	
RM-CG	Y023-Yamaha...	V3.0.0	192.168.0.35	F4:D5:80:12:9C:B8	255.255.255.0	
RM-TT	Y027-Yamaha...	V3.0.0	192.168.0.39	AC:44:F2:6E:2D:80	255.255.255.0	
RM-TT	Y028-Yamaha...	V3.0.0	192.168.0.40	AC:44:F2:6E:31:A3	255.255.255.0	
RM-TT	Y029-Yamaha...	V3.0.0	192.168.0.41	AC:44:F2:6E:31:41	255.255.255.0	
RM-TT	Y02A-Yamaha...	V3.0.0	192.168.0.42	AC:44:F2:6E:31:49	255.255.255.0	
RM-TT	Y02B-Yamaha...	V3.0.0	192.168.0.43	AC:44:F2:6E:31:47	255.255.255.0	
RM-TT	Y02C-Yamaha...	V3.0.0	192.168.0.44	AC:44:F2:6E:31:36	255.255.255.0	
RM-TT	Y02D-Yamaha...	V3.0.0	192.168.0.45	AC:44:F2:6E:2D:56	255.255.255.0	
RM-TT	Y02E-Yamaha...	V3.0.0	192.168.0.46	AC:44:F2:6E:2D:55	255.255.255.0	

"Firmware Update" Screen

This screen allows you to update the firmware of detected devices. It can be displayed by clicking the [Firmware Update] button in the "RM Device Finder" main screen or by using the menu path below.

[File] → [Firmware Update]



1 "Path"

Displays the path of the selected firmware file.

2 [...] button

Allows you to select a firmware file.

3 "File Info" list

Lists models compatible with the selected firmware file and their version numbers.

4 "Select Devices to Update" list

Lists devices and the progress of their firmware updates.

Status	Progress
Updating...	"Updating..." flashes in the screen while the firmware file is being transferred. The progress of the update is indicated by a progress bar.
Success	Indicates that the firmware file transfer is finished and the update was successful.
Failed	Indicates that the firmware file transfer is finished, but the update failed.

Status	Progress
Skip	Indicates that the device did not respond to the firmware update command, or that the firmware file transfer is finished, but the update was skipped for some reason.
Error	Indicates that an error occurred while transferring the file or that the device did not respond after the file was sent.

5 [Refresh] button

Clears the "Select Devices to Update" list and detects devices again.

6 [Network] button

Displays the ["Select Network Interface Card" screen](#) so that a network interface card can be selected.

7 [Update] button

Starts the firmware update.

8 [Identify] button

Causes the indicator of the device selected in the list to flash for 5 seconds. Used to identify equipment.

9 [Browse] button

Opens (in a web browser) the Web GUI "Device Manager" for the device selected in the list.

10 [Close] button

Closes the ["Firmware Update" screen](#).



NOTE

- No buttons can be clicked while firmware is being updated.
- Firmware for RM-WCH-8, RM-WDR, RM-WOM, RM-WGS, and RM-WGL cannot be updated by using "RM Device Finder". Update these devices by using Web GUI "RM-CR Device Manager".
- For details, refer to the Reference Manual for the RM Series Wireless Microphone.

Updating the Firmware

You can update the device's firmware from the "Firmware Update" screen.

Firmware Update

Firmware File

Path: D:\UC\RM#DeviceFinder\FW#ADECIA_Firmware_V200a09bundle

File Info

Model	Version
RM-CG	V2.0.0
RM-CR	V2.0.0
RM-TT	V2.0.0
RM-WAP	1.8.2
VXL1-16P	R2.0.0

Select Devices to Update Refresh

Model	Label	Version	IP Address	Status	Web UI
<input checked="" type="checkbox"/> RM-CG	CG_001	V2.0.0			
<input checked="" type="checkbox"/> RM-CR	CR_001	V2.0.0			
<input checked="" type="checkbox"/> RM-TT	TT_001	V2.0.0			
<input checked="" type="checkbox"/> RM-WAP-16	WAP_001	1.8.2			
<input checked="" type="checkbox"/> VXL1-16P	VXL1_001	R2.0.0a0.1			
<input checked="" type="checkbox"/> VXL1-16P	VXL1_002	R2.0.0a0.1			

Network **Update** Identify Browse Close

Follow the steps below to update the firmware:

1. **Select the firmware file from the file selection screen that appears when you click the [...] button.**

The firmware file can be downloaded from the Yamaha website.

Yamaha website:

<https://download.yamaha.com>

2. **In the "Model" column of the "Select Devices to Update" list, check the boxes next to the devices you want to update.**
3. **Then click the [Update] button.**
4. **Follow the on-screen instructions to perform the firmware update.**
A dialog box confirming completion will appear when the update is complete.

Using the Divide/Combine Room Feature

If you want to variably partition a room or share ADECIA devices or audio signals in multiple rooms, the "RM Device Finder" Divide / Combine Room feature allows you to switch between the divide/combine configurations and the presets required to verify that the features are working in the room.

Follow the following steps to use the Divide/Combine Room feature.

1. In [Tools], go to [Divide / Combine Room Wizard] to change room division/combination settings, and set used devices and presets.
2. In [Tools], go to [Preset Recall] to recall the presets set in 1.

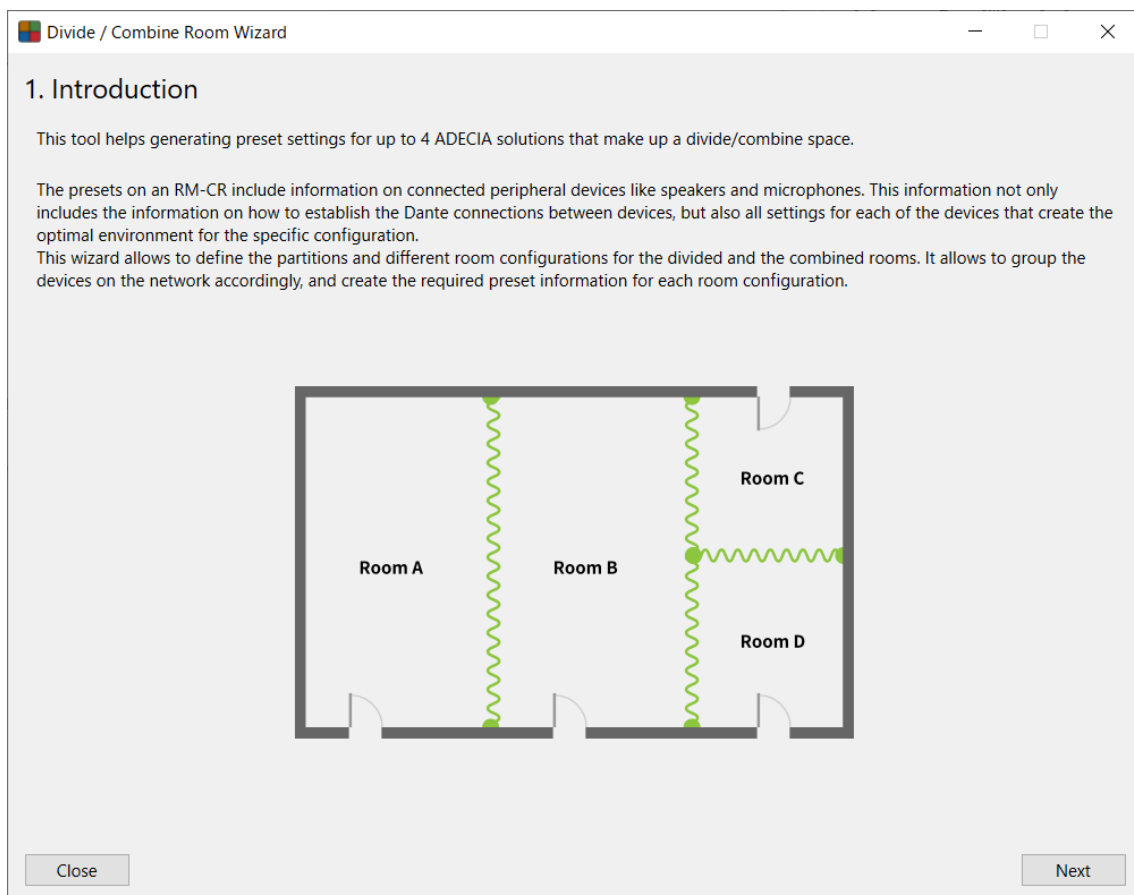
"Divide / Combine Room Wizard"

Follow the instructions displayed on the Wizard Screen to make settings.

"Introduction" Screen

This is a feature description screen for the "Divide / Combine Room Wizard". It explains the following:

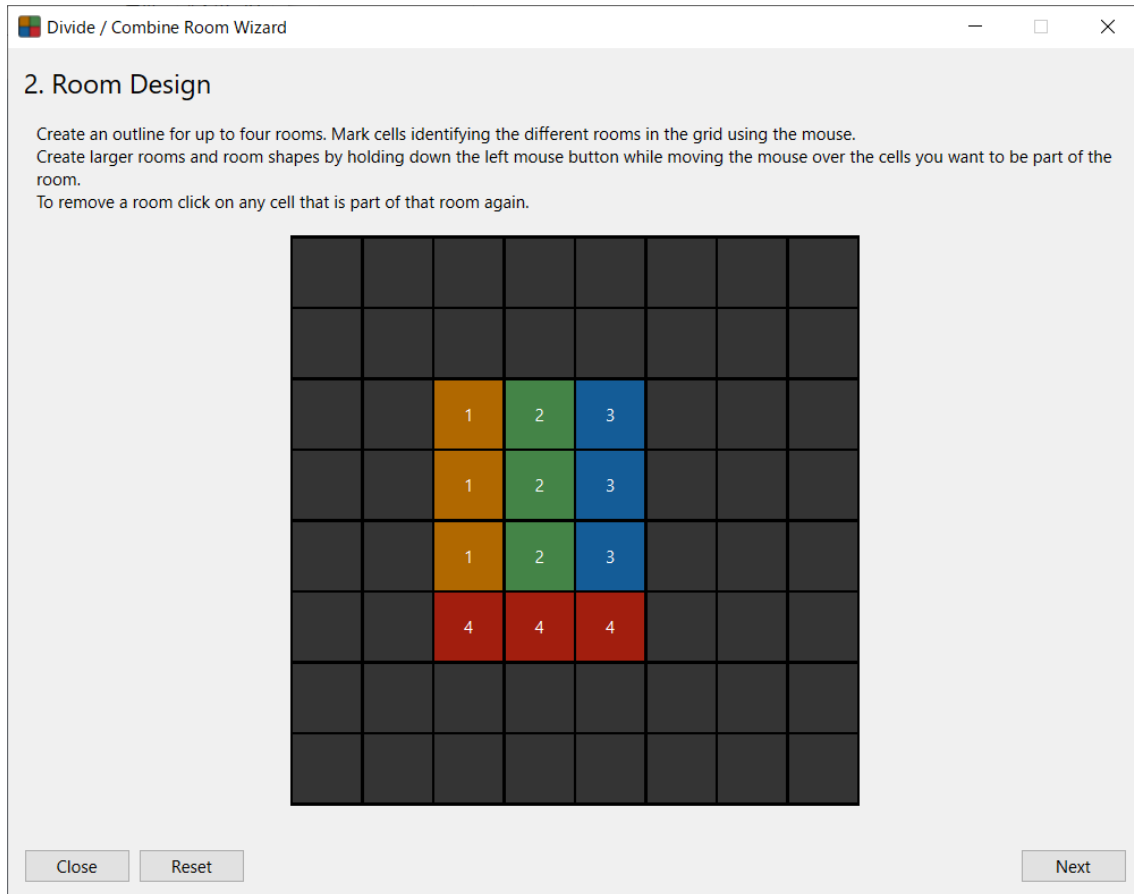
- These settings can be used to divide or merge up to four adjacent rooms.
- Presets can be saved using this feature to match the settings of rooms and used devices to usage scenarios.
- This Wizard allows you to configure rooms, group devices on the network around RM-CR, and then create multiple presets with different device configurations.



Click the [Nex] button to continue to the next screen. Click the [Close] button to close the Wizard Screen.

"Room Design" Screen

Drag the cell to create a "Room". You can create up to four "Rooms".



Click the [Reset] button to delete all of the "Rooms" you have created.

Click the [Next] button to continue to the next screen.

Click the [Close] button to close the Wizard Screen. You can also save the all the settings you have configured in the Wizard up to this point.

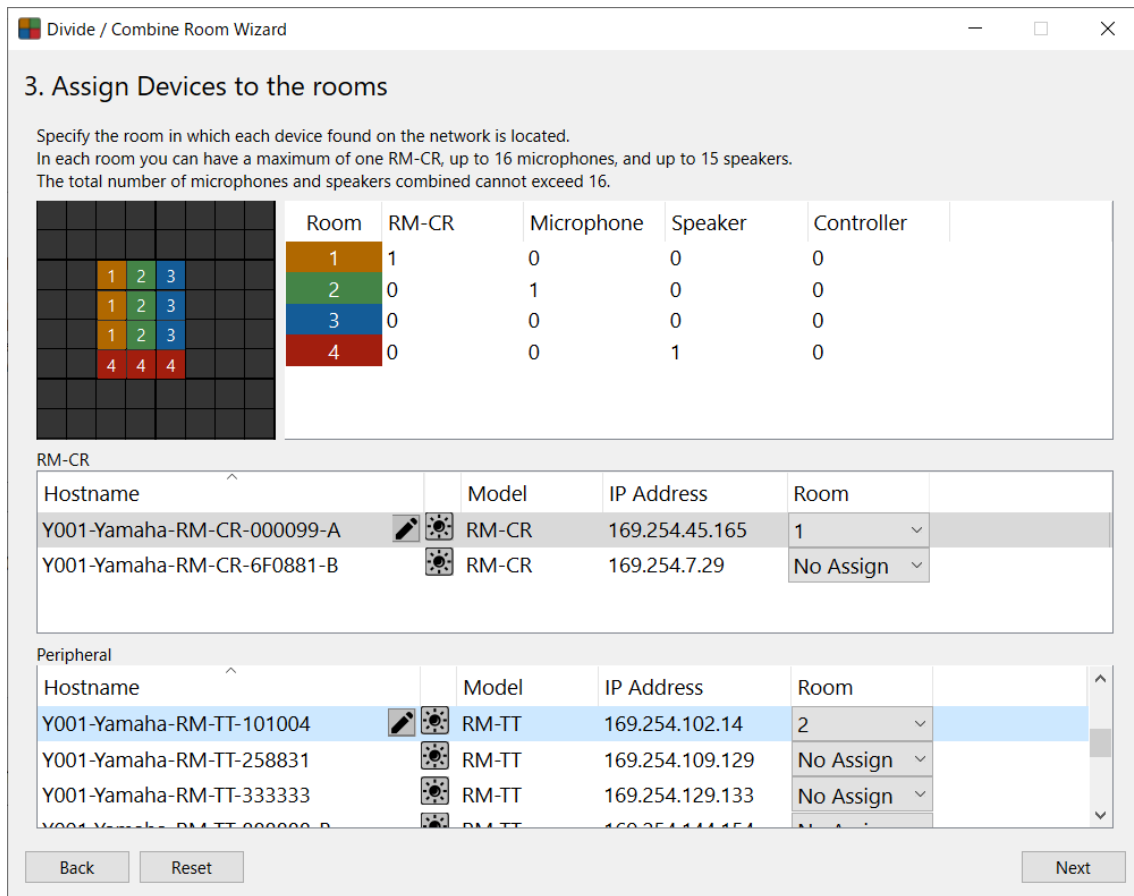



NOTE

- Click the "Room" you created again to delete it.
- Dragging the "Room" lets you expand it.

"Assign Devices to the rooms" Screen

Any RM-CRs and peripheral devices (such as microphones and speakers) detected on the network will be displayed in a list. You can designate the "Rooms" in which each device can be used.



Click the  Edit button to change the Hostname of the selected device.

Click the LED Indicator button to cause the LED of the selected device to blink.

Click the [Reset] button to clear the numbers of all designated "Rooms".

Click the [Next] button to continue to the next screen.

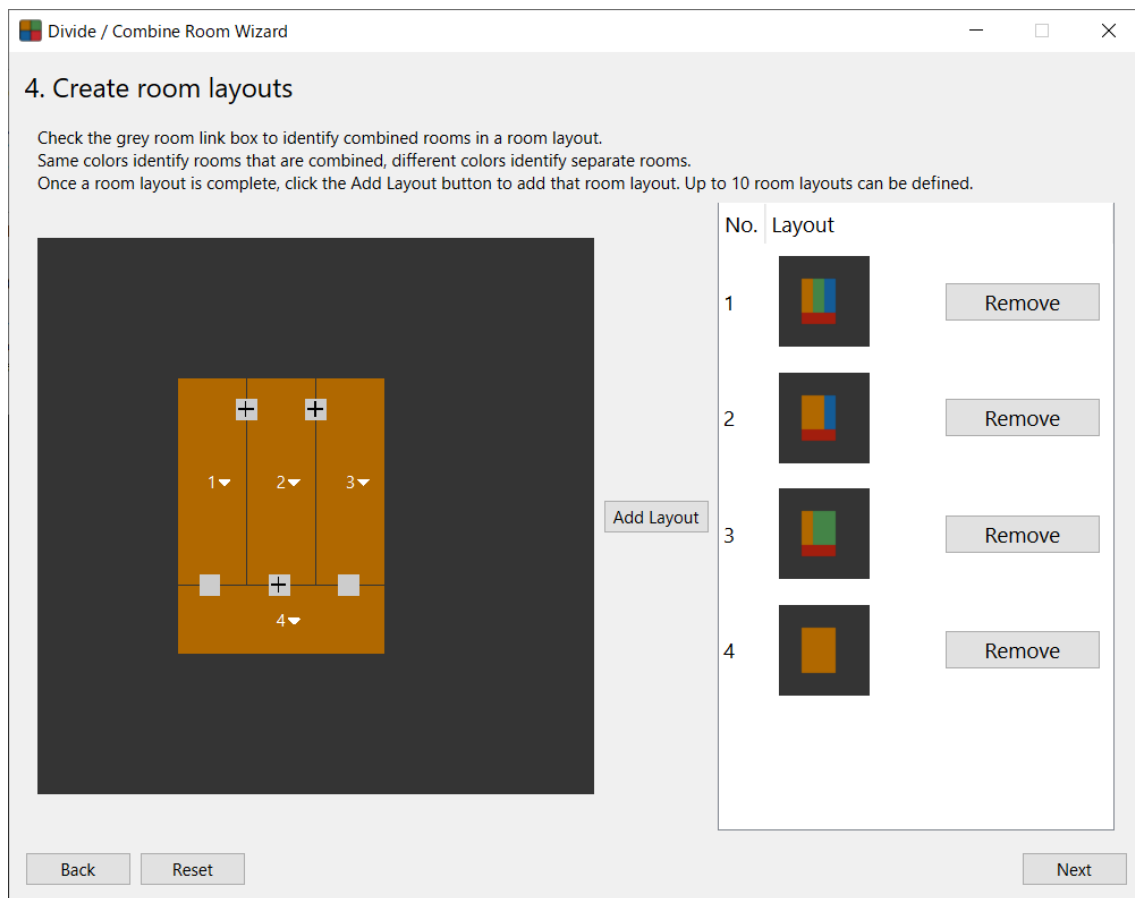
Click the [Back] button to return to the previous screen.



One room can contain up to one RM-CR, 16 microphones, and 15 speakers. Also, make sure that the total number of microphones and speakers in a room is no more than 16.

"Create room layouts" Screen

Use the partitioning buttons in the spaces between rooms to register all of the ways you anticipate a room will be used. This will allow you to register various partitioned and merged patterns as "Layouts".



Click the [Add Layout] button to register a "Layout".

Click the [Remove] button to delete a registered "Layout".

Click the [Reset] button to delete all registered "Layouts".

Click the [Next] button to continue to the next screen.

Click the [Back] button to return to the previous screen.



NOTE

- Up to 10 "Layouts" may be registered.
- Rooms that have the same color will be used as a single room.

"Select the Devices for each combined rooms" Screen

Here, you can set the devices that will be used in each room for the "Layouts" you have created.

- ① Select a "room combination".
- ② Select RM-CR.
- ③ Determine configurations for the peripheral devices.

Divide / Combine Room Wizard

5. Select the Devices for each combined rooms

Select which devices are to be used in each of the room combinations created in the previous step.
For combined rooms select the devices that are to be used in that configuration.
Please select exactly one RM-CR and up to 16 other peripherals.
If more devices than supported are being selected the listing will appear in red.

Select a room combination

No.	Layout	Room
1	1	1
2	1	2
3	1	3
4	1	4
5	2	1,2
6	2	3
7	2	4
8	3	1
9	3	2,3
10	3	4
11	4	1,2,3,4

RM-CR

RM-CR	Microphone	Speaker	Controller
1	1	1	0

RM-CR

Hostname	Model	IP Address	Room	
Y001-Yamaha-RM-CR-000099-A	RM-CR	169.254.45.165	1	Remove

Peripheral

Hostname	Model	IP Address	Room	
Y001-Yamaha-RM-TT-101004	RM-TT	169.254.102.14	2	Remove
Y001-Yamaha-VXL1-16P-4E3034	VXL1-16P	169.254.53.48	4	Remove

Buttons: Back, Reset, Next

Click the [Remove] button to delete a device from a "room combination".

Click the [Reset] button to clear all of the set "room combinations".

Click the [Next] button to continue to the next screen.

Click the [Back] button to return to the previous screen.



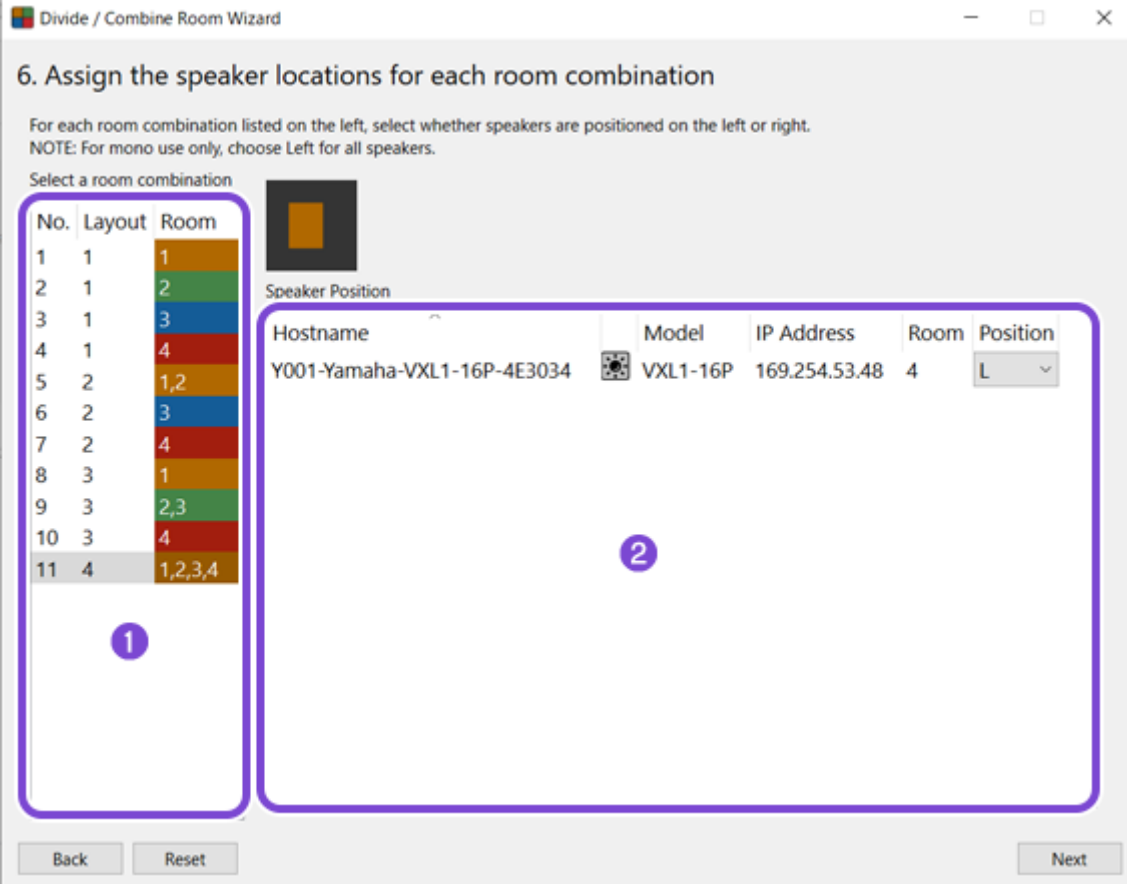
NOTE

If a "room combination" is displayed in red text, this means that you have exceeded the maximum usable "room combinations", and you will need to make adjustments

"Assign the speaker locations for each room combination" Screen

On this screen you can select a "room combination" and set the source type (L/R) for a Dante speaker.

- ① Select a "room combination".
- ② Set the "Position" of the speaker.



Divide / Combine Room Wizard

6. Assign the speaker locations for each room combination

For each room combination listed on the left, select whether speakers are positioned on the left or right.
NOTE: For mono use only, choose Left for all speakers.

Select a room combination

No.	Layout	Room
1	1	1
2	1	2
3	1	3
4	1	4
5	2	1,2
6	2	3
7	2	4
8	3	1
9	3	2,3
10	3	4
11	4	1,2,3,4

①

Speaker Position

Hostname	Model	IP Address	Room	Position
Y001-Yamaha-VXL1-16P-4E3034	VXL1-16P	169.254.53.48	4	L

②

Back Reset Next

Click the [Reset] button to clear all source type (L/R) settings for the speakers.

Click the [Next] button to continue to the next screen.

Click the [Back] button to return to the previous screen.


"Create presets" Screen

Set a preset name for "Layouts" for each room.

Divide / Combine Room Wizard

7. Create presets

Each room combination will be configured as a preset on the RM-CRs.
Please provide a name for the preset.



Select a room combination

No.	Layout	Rooms	Preset Names
1	1	1	Room 1
2	1	2	Room 2
3	1	3	Room 3
4	1	4	Room 4
5	2	1,2	Room 1+2
6	2	3	Room 3
7	2	4	Room 4
8	3	1	Room 1
9	3	2,3	Room 2+3
10	3	4	Room 4
11	4	1,2,3,4	Room 1+2+3+4

Back

Reset

Next

Click the [Reset] button to clear all the "Preset Names" that you entered.
Click the [Next] button to continue to the next screen.
Click the [Back] button to return to the previous screen.

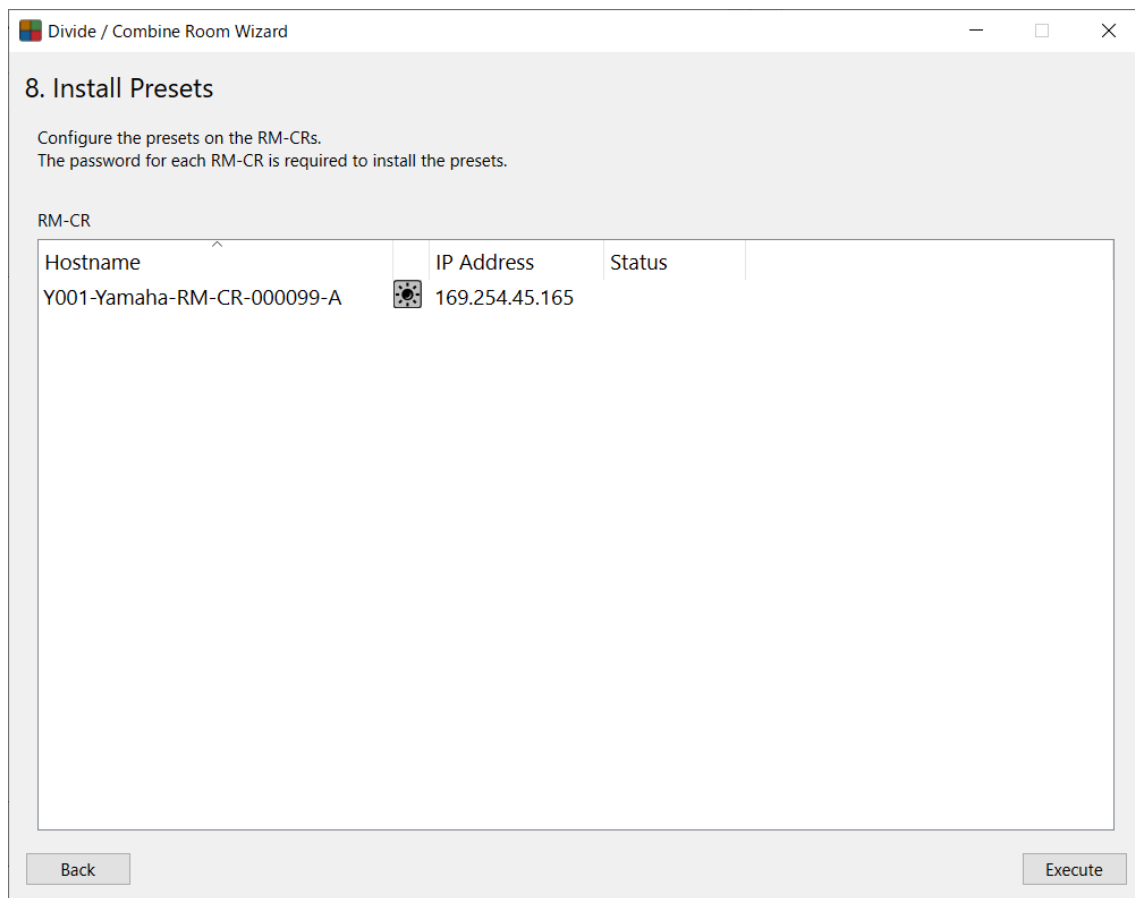


NOTE

Register a "Layout" as a preset for all networked RM-CRs

"Install Presets" Screen

Click the [Execute] button to register your created Presets with all RM-CRs on the network. You will need a login password for the "RM-CR Device Manager" to register presets.



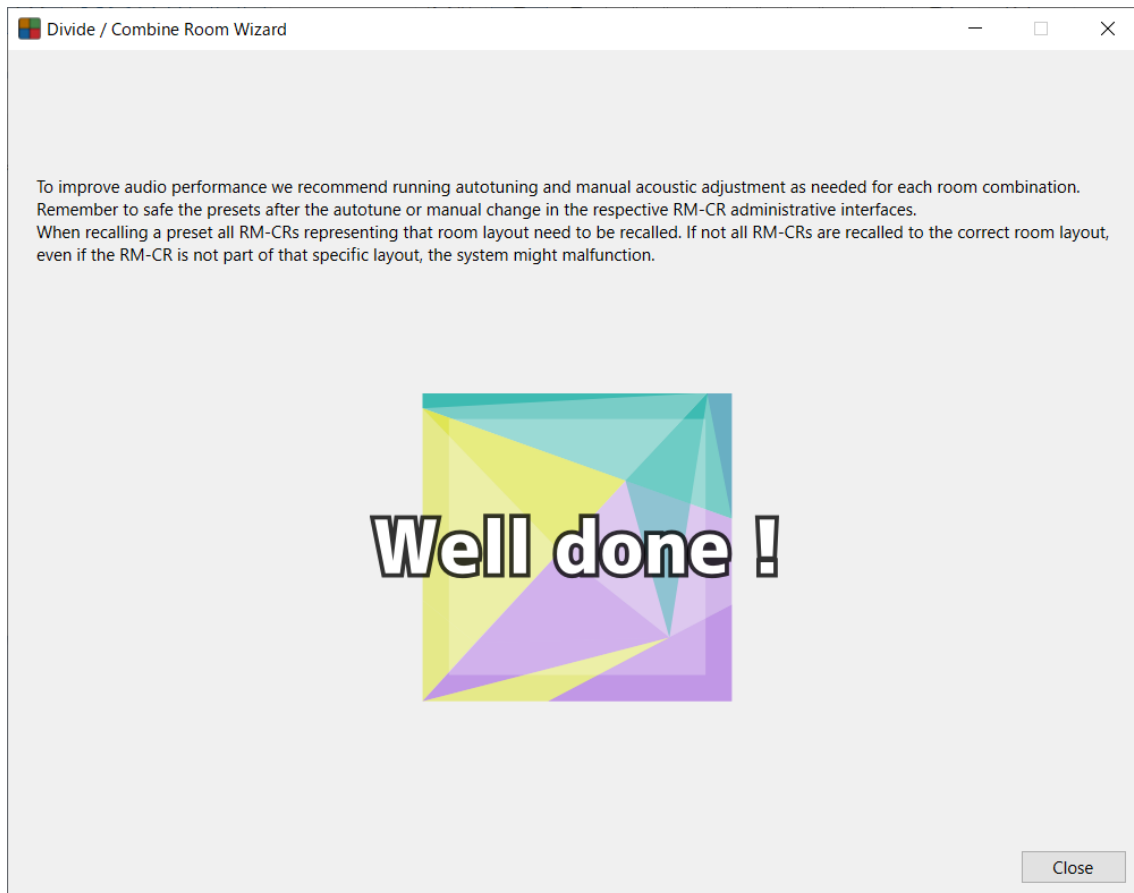
Click the [Back] button to return to the previous screen.

Completion Screen

You have completed your configuration.

Click the [Close] button to close the Wizard.

You can switch between registered settings on the "Preset Recall" screen.

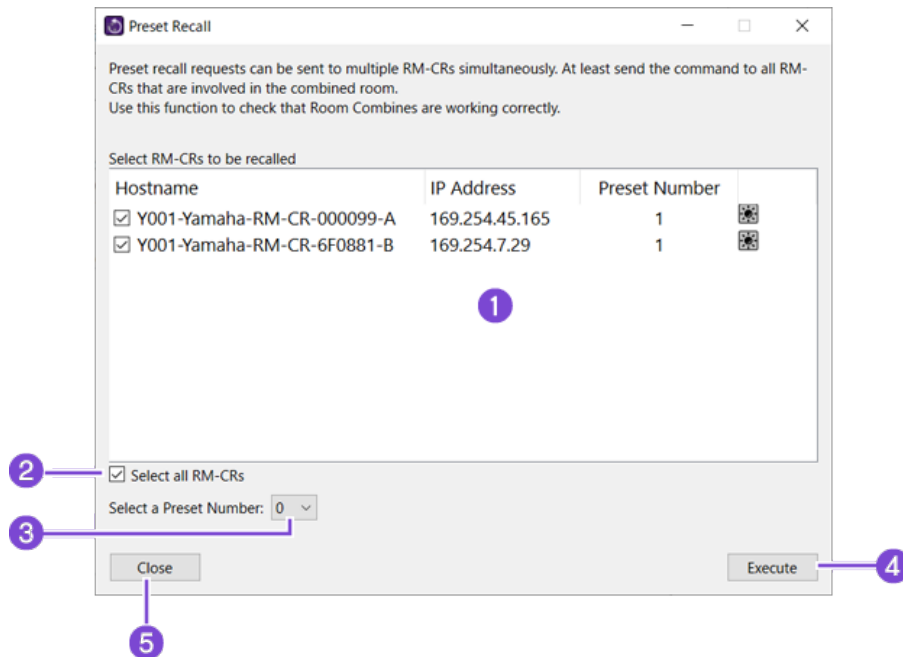


NOTE

If necessary, adjust sound quality and override presets by going to "[Preset Recall](#)" screen to make adjustments and conduct overrides while device configurations are reflected for each room. Use the "Device Manager" web GUI to adjust sound quality and override presets.

"Preset Recall" Screen

You can recall presets for multiple selected RM-CRs at the same time. "Divide / Combine Room Wizard" presets are switched on this screen.



1 "RM-CR" Device List

Displays a list of the RM-CRs detected on the network. Select the device for which you want to recall the preset.

2 [Select all RM-CRs]

Sets all RM-CRs listed in the "RM-CR" Device List as targets for preset recall.

3 [Select a Preset Number]

Select the number of the preset you want to recall.

4 [Execute]

Recalls the preset numbers in 3 for all RM-CRs selected in 1.

5 [Close]

Close the "Preset Recall" screen.

Assigning Functions to CTL-BN1

Any one of the following functions can be assigned to the CTL-BN1 button.

Function	Description
Mic Mute All	Mutes all microphones.
Mic Mute Group	Mutes grouped microphones.
Mic Mute Individual	Mutes a single microphone.
Mic Mute Force All Individual	Mutes microphones not grouped.
Speaker Mute	Mutes the speaker.
Control Sets	Sends Control Sets (commands) registered with CTL-BN1.
Preset Recall	Recalls presets registered with RM-CR.
Divide / Combine Room	Switches device settings according to specified room divisions/combinations.

In order to assign functions to CTL-BN1, display the "CTL-BN1 Configuration Settings" screen.

[Tools] → [CTL-BN1 Configuration Settings]



NOTE


- The "CTL-BN1 Configuration Settings" screen is a settings tool for using CTL-BN1 independently of RM-CR.
When using CTL-BN1 as a peripheral of RM-CR, use the settings under "Peripheral Detail / CTL-BN1" in the Web GUI "RM-CR Device Manager".
- For details on CTL-BN1, refer to the CTL-BN1 Reference Manual.

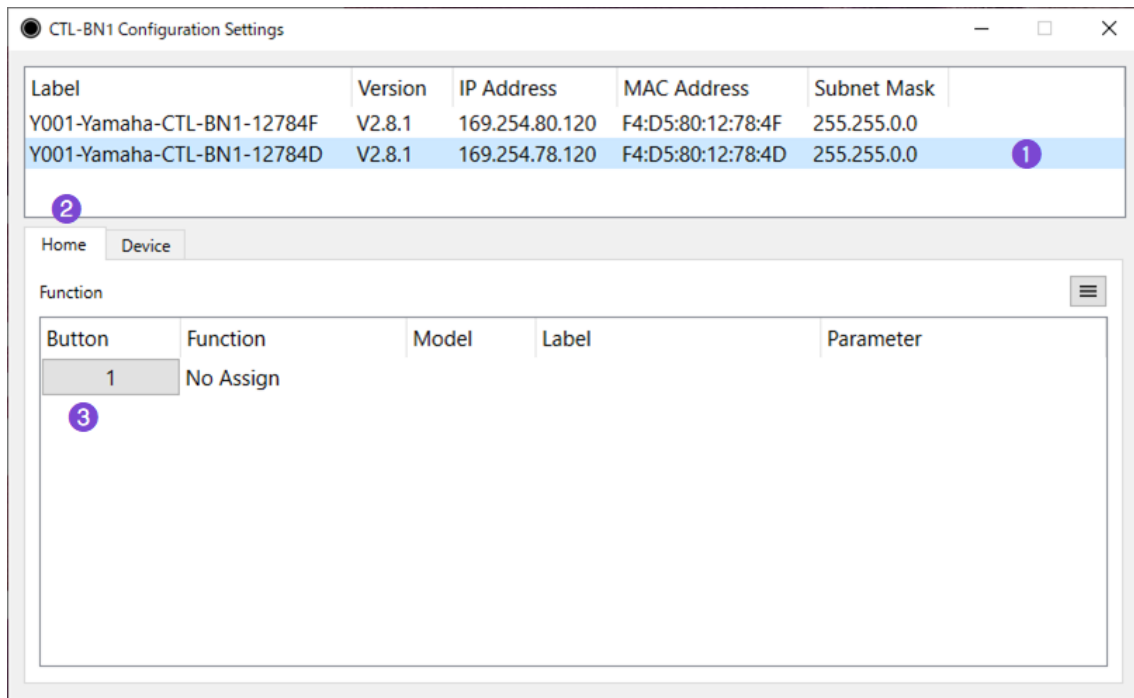
"CTL-BN1 Configuration Settings" Screen

This explains how to use the "CTL-BN1 Configuration Settings" screen.

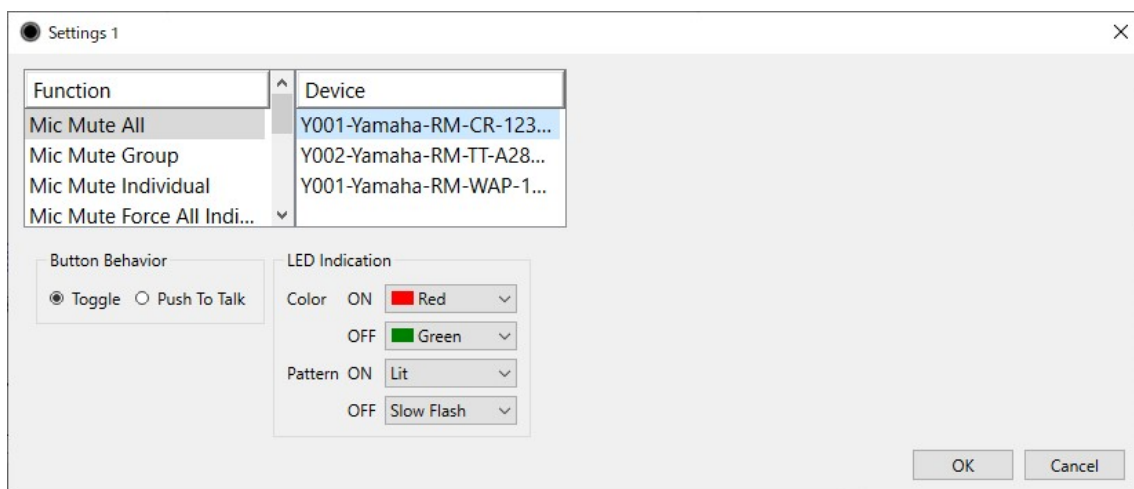
Displaying the CTL-BN1 Function Assignment Dialog Box ([Home] Tab)

Follow the steps below to display the CTL-BN1 function assignment dialog box.

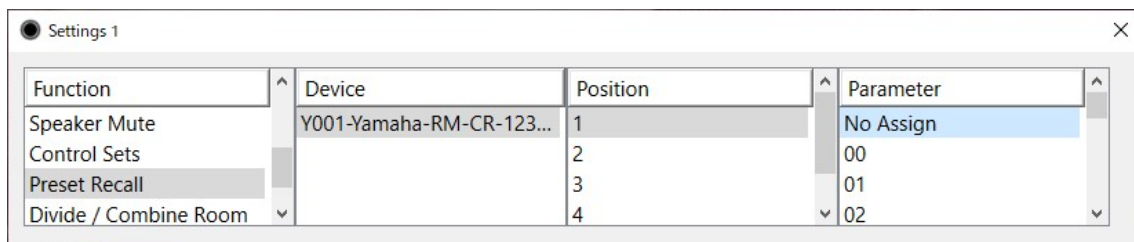
- ❶ Select the CTL-BN1 to be set.
- ❷ Click the [Home] tab.
- ❸ Click .



The CTL-BN1 function assignment dialog box appears.



Selecting a Function To Be Assigned



"Function" list

Select the function to be assigned.
The settings for the selected function appear.

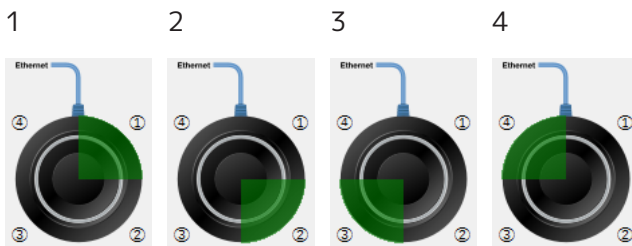
"Device" list

Lists devices that can be used with the selected function.

"Position" list

Each of the four LED ring sections has a position number. This appears when the "Control Sets", "Preset Recall" or "Divide/Combine Room" feature was selected, and it allows the function to have four events.

Click the image to rotate it 180°. Select the orientation that corresponds to the installation of CTL-BN1.

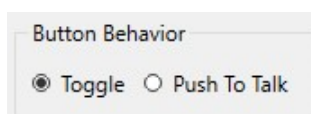


"Parameter" list

Lists settings related to the additional parameter for the selected function, for example, the microphone number, microphone mute group number, preset number.

"Button Behavior"

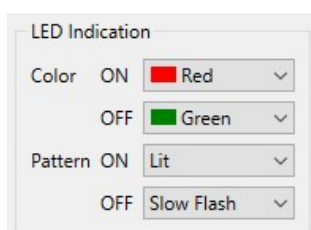
Select how muting is to be performed.



- [Toggle]: Pressing the button switches between muting/unmuting.
- [Push To Talk]: Unmutes while the button is pressed.

"LED Indication"

Select the indicator color and lighting pattern.



- [Color]: Select the color for each button status.
- [Pattern]: Select the lighting pattern for each button status. ([Off], [Lit], [Slow Flash] or [2 Times Flash])

Details of the Functions That Can Be Assigned

Mic Mute All

This function mutes all microphones.

Function	Device
Mic Mute All	Y001-Yamaha-RM-CR-123...
Mic Mute Group	Y002-Yamaha-RM-TT-A28...
Mic Mute Individual	Y001-Yamaha-RM-WAP-1...
Mic Mute Force All Indi...	

Button Behavior
☒ Toggle ☐ Push To Talk

LED Indication
 Color ON ■ Red
 OFF ■ Green
 Pattern ON Lit
 OFF Slow Flash

Mic Mute Group

This function mutes the grouped microphones.

Under "Parameter", select the group number for the microphones to be muted.

Function	Device	Parameter
Mic Mute All	Y001-Yamaha-RM-CR-123...	01
Mic Mute Group	Y001-Yamaha-RM-WAP-1...	02
Mic Mute Individual		03
Mic Mute Force All Indi...		04

Button Behavior
☒ Toggle ☐ Push To Talk

LED Indication
 Color ON ■ Red
 OFF ■ Green
 Pattern ON Lit
 OFF Slow Flash

Mic Mute Individual

This function mutes a single microphone.

Under "Parameter", select the number that identifies the microphone. If an RM-CR was selected under "Device", select the Dante input channel. If an RM-WAP was selected under "Device", select the microphone number.

Function	Device	Parameter
Mic Mute All	Y001-Yamaha-RM-CR-123...	01
Mic Mute Group	Y002-Yamaha-RM-TT-A28...	02
Mic Mute Individual	Y001-Yamaha-RM-WAP-1...	03
Mic Mute Force All Indi...		04

Button Behavior
☒ Toggle ☐ Push To Talk

LED Indication
 Color ON ■ Red
 OFF ■ Green
 Pattern ON Lit
 OFF Slow Flash

Mic Mute Force All Individual

This function mutes all microphones that are not grouped.

Function	Device
Mic Mute Group	Y001-Yamaha-RM-CR-123...
Mic Mute Individual	Y001-Yamaha-RM-WAP-1...
Mic Mute Force All Indi...	
Speaker Mute	

LED Indication
 Color Red ▼
 Pattern Lit ▼

Speaker Mute

This function mutes the speaker.

Function	Device
Mic Mute Individual	Y001-Yamaha-RM-CR-123...
Mic Mute Force All Indi...	Y001-Yamaha-VXC2P-4E6...
Speaker Mute	
Control Sets	

LED Indication
 Color ON Red ▼
 OFF Green ▼
 Pattern ON Lit ▼
 OFF Slow Flash ▼

Control Sets

This function sends Control Sets (commands) registered with CTL-BN1.

Under "Position", select the position number for one of the four LED ring sections, and then register the Control Set. Settings can be specified for each of the four position numbers.

With "Event Mode", separate On and Off Control Sets can be registered. Be sure to check this setting before registering a Control Set.

- Single Command Sequence: The same Control Set is sent each time the button is pressed.
- Toggle(On/Off): Each press of the button alternately sends the On Control Set or the Off Control Set.

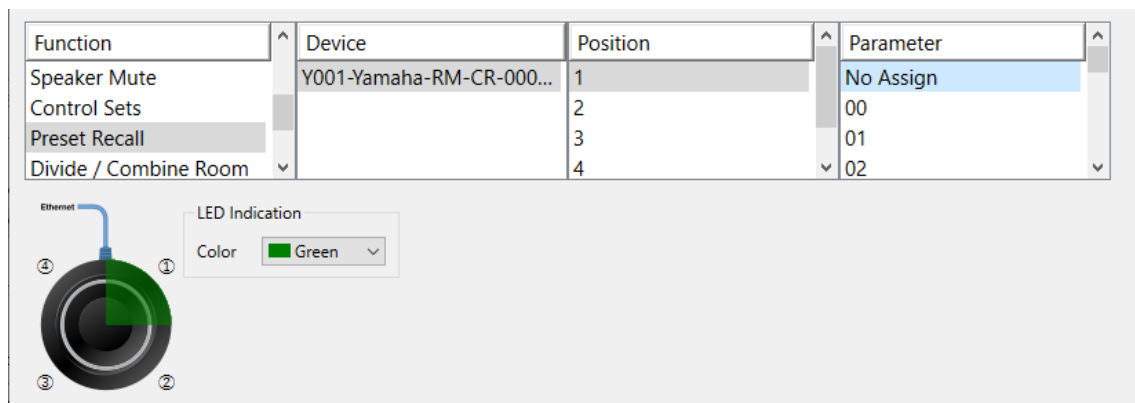
Up to five commands can be specified in each Control Set. Specify the following information for each command.

- "Protocol" Transmission protocol ([UDP] or [TCP])
- "IP Address" IP address of the device
- "Port No." Port number for the device
- "Delay" Delay time between pressing the button and sending the command
- "Comments" Comments
- "Command" Commands ([Hex] or [ASCII]), up to 256 bytes

Preset Recall

This function recalls presets registered with RM-CR.

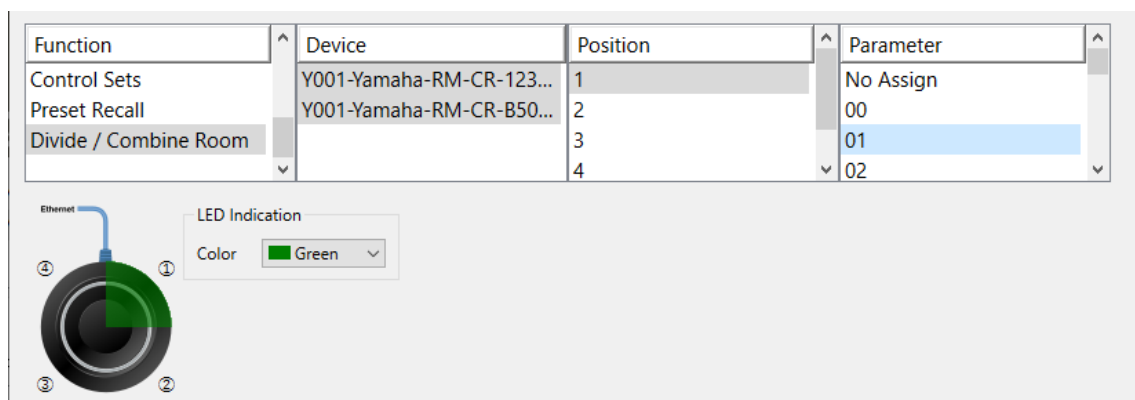
Under "Position", select the position number for one of the four LED ring sections. Then, under "Parameter", select the preset number. Settings can be specified for each of the four position numbers.



Divide / Combine Room

This function switches device settings according to specified room divisions/combinations. This is the same as "Preset Recall", explained in "Using the Divide/Combine Room Feature".

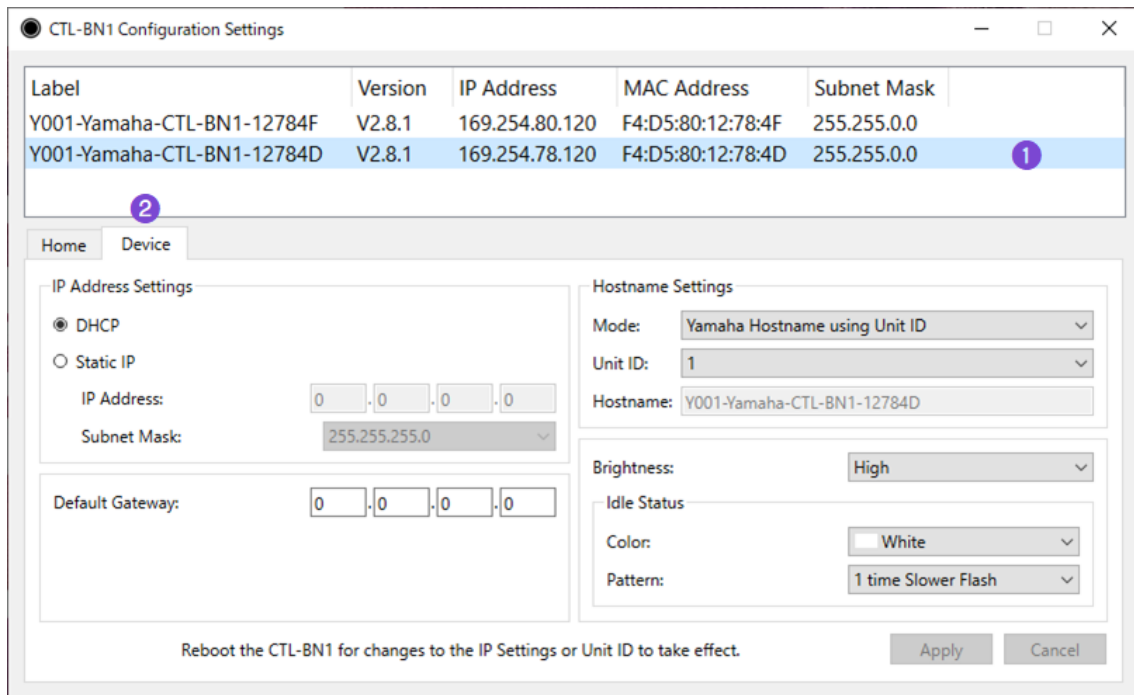
Under "Device", select the RM-CR for each room to be configured. Under "Position", select the position number for one of the four LED ring sections. Then, under "Parameter", select the preset number. Settings can be specified for each of the four position numbers.



CTL-BN1 Basic Settings Tab ([Device] Tab)

Follow the steps below to display the CTL-BN1 basic settings tab.

- ① Select the CTL-BN1 to be set.
- ② Click the [Device] tab.



"IP Address Setting"

Specifies the IP address. Select whether to use DHCP or assign a static IP address.

To assign a static IP address, specify settings for the following.

"IP Address"

"Subnet Mask"

"Default Gateway"

"Hostname Settings"

Specifies the hostname for CTL-BN1.

- "Mode" [Yamaha Hostname using Unit ID]: The hostname is automatically generated from the unit ID, model name and MAC address.
[Manual]: Specify manually.
- "Unit ID" Select the unit ID. If [Manual] was selected, this is not available.
- "Hostname" Type in the hostname. If [Yamaha Hostname using Unit ID] was selected, the hostname that was generated is displayed.

"Brightness"

Select the brightness of the indicators.

"Idle Status"

Specifies the settings for the idle state indicators.

- "Color" Select the color.
- "Pattern" Select the lighting pattern.

