

# MMP1 Firmware Update Guide

---

Thank you for choosing a Yamaha product.

This guide explains how to update the MMP1 firmware and its built-in Dante module firmware.

## ■ Precautions (Please be sure to read this section first!)

The user assumes full responsibility for the update.

Update the firmware components one device at a time.

Please note that the device may be damaged if you fail to follow these instructions properly, or turn off the device or disconnect the cable while the update is in progress.

If the update fails, and the device still does not operate correctly even after you execute the update once again, please contact your Yamaha dealer.

Yamaha Corporation owns exclusive copyrights for the MMP1 firmware, its update program, and this guide.

Audinate owns exclusive copyrights for the Dante firmware and its update program.

It is prohibited to duplicate or modify the firmware, software or guides, in part or in their entirety, without permission from the copyright owner.

The screen shots as shown in this guide are for instructional purposes only.

Dante is a registered trademark of Audinate.

Windows is a registered trademark of Microsoft® Corporation in the United States and other countries.

Mac is trademark of Apple Inc. registered in the U.S. and other countries.

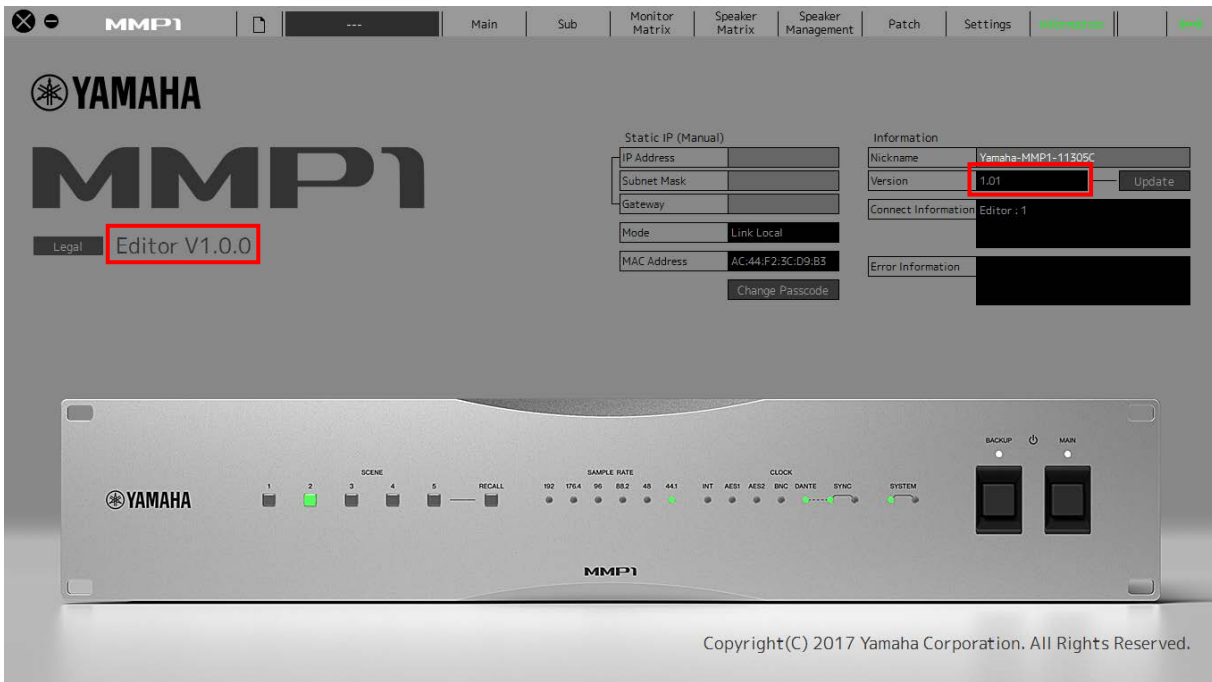
The company names and product names in this document are the trademarks or registered trademarks of their respective companies.

Software may be revised and updated without prior notice.

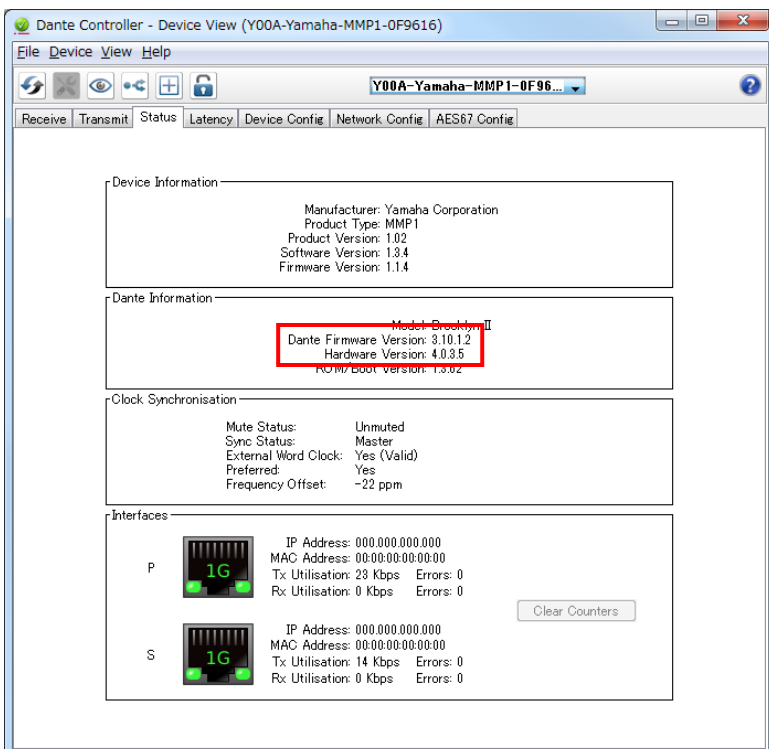
## ■ Checking the version number

You can check the MMP1 Editor and the MMP1 firmware version number from the MMP1 Editor. You can also check the Dante firmware version number from the Dante Controller.

### MMP1 Editor – Information screen



### Dante Controller – Device View screen



## ■ Preparing for the update

In order to update, you will need to prepare the following items.

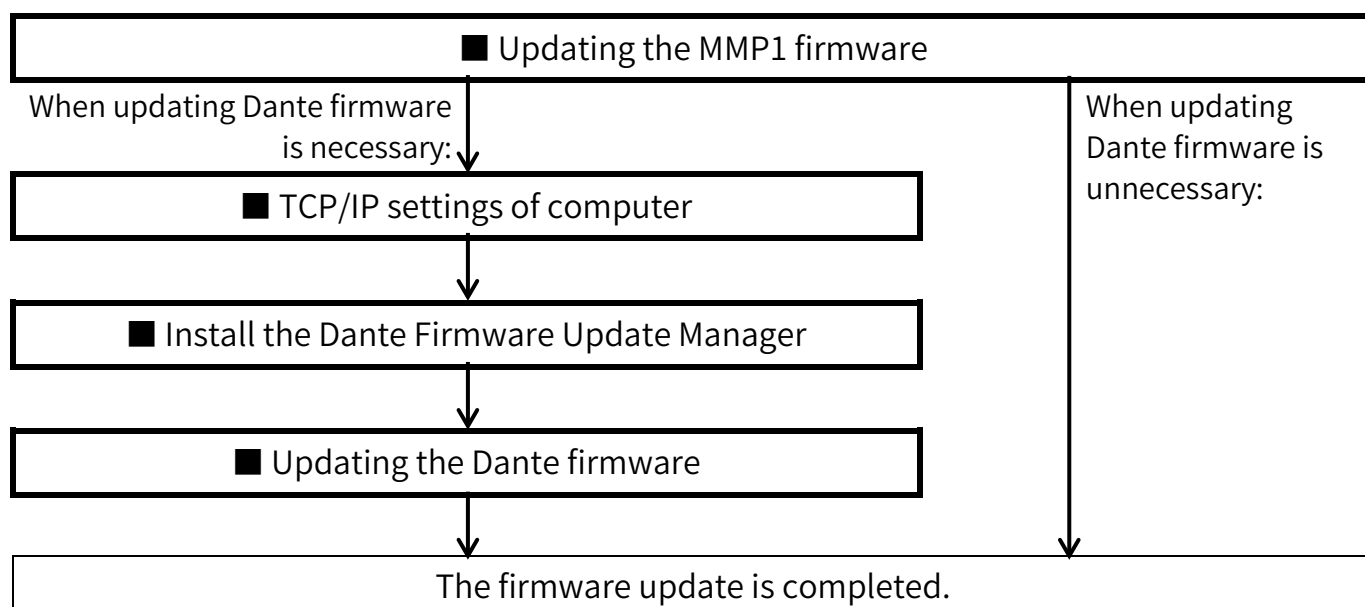
- A computer in which MMP1 Editor is operating normally
- An Ethernet cable (CAT5e or higher recommended. Straight or cross.)
- The latest version MMP1 Editor
- Firmware (Dante firmware is contained in the same compressed file as MMP1 firmware.)

### NOTE

Download the latest MMP1 Editor and the latest firmware from the following URL: <http://www.yamahaproaudio.com/>

## ■ Update procedure sequence

Update each firmware component in the following sequence. If you plan to update multiple MMP1 devices, repeat the sequence for each device.



\* Refer to the section "MMP1 Compatibility" at the Yamaha Pro Audio site (below) for details Dante firmware update requirements.

<http://www.yamahaproaudio.com/>

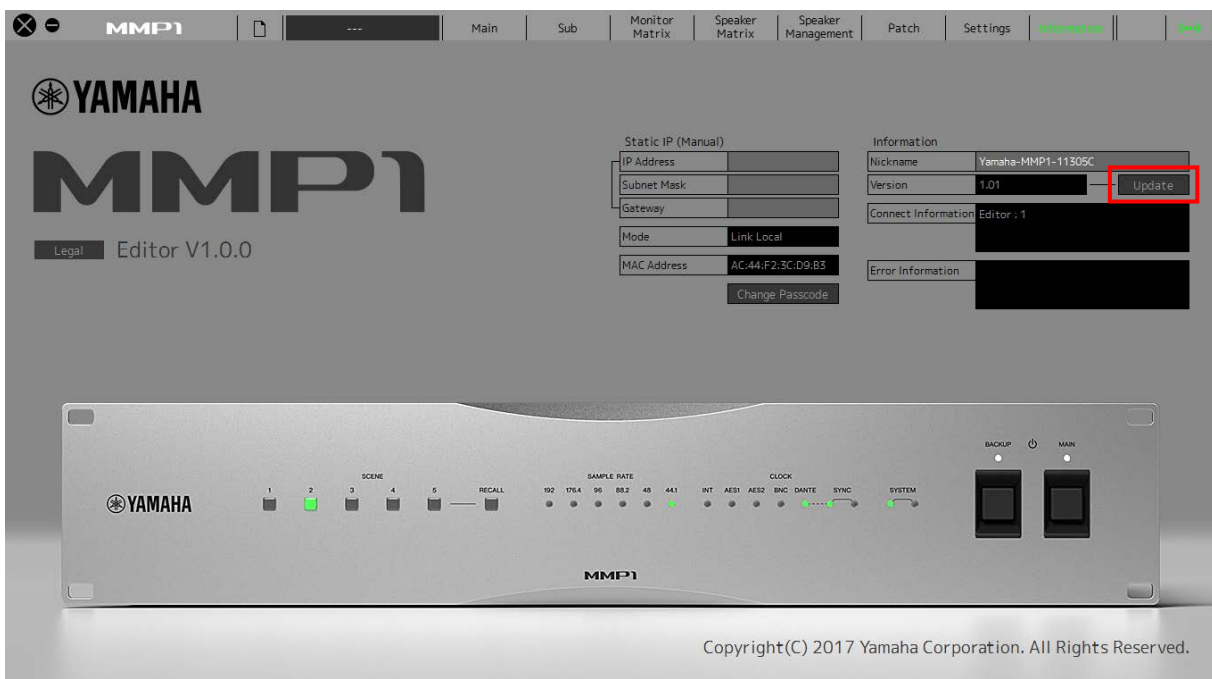
## ■ Updating the MMP1 firmware

Described below are the procedures to update the MMP1 firmware.  
Uncompress the compressed file you downloaded in advance.

### NOTICE

When the MMP1 firmware is updated, all data except Scenes and Snapshots are erased. In the following instructions, transfer the data from the MMP1 to the MMP1 Editor once, and then restore the data after updating the firmware.

1. Update the MMP1 Editor to the latest version.
2. Open the MMP1 Editor, and then log in as “Administrator.”
3. Connect the MMP1 to which you want to update the firmware with the “MMP1 → Editor” option.
4. Call up the Information screen on the MMP1 Editor, and then click “Update.”



The “Save As” dialog box will be displayed.

**5. Specify the location to save the current settings, and then click “Save.”**

The “Open” dialog box will be displayed.

**6. Select the firmware file “MMP1\_firmxxx.mmpf, ” and then click “Open.”**

The characters “xxx” represent the firmware version number.

**7. Confirm the firmware version number, and then click “Yes” if the number is correct.**

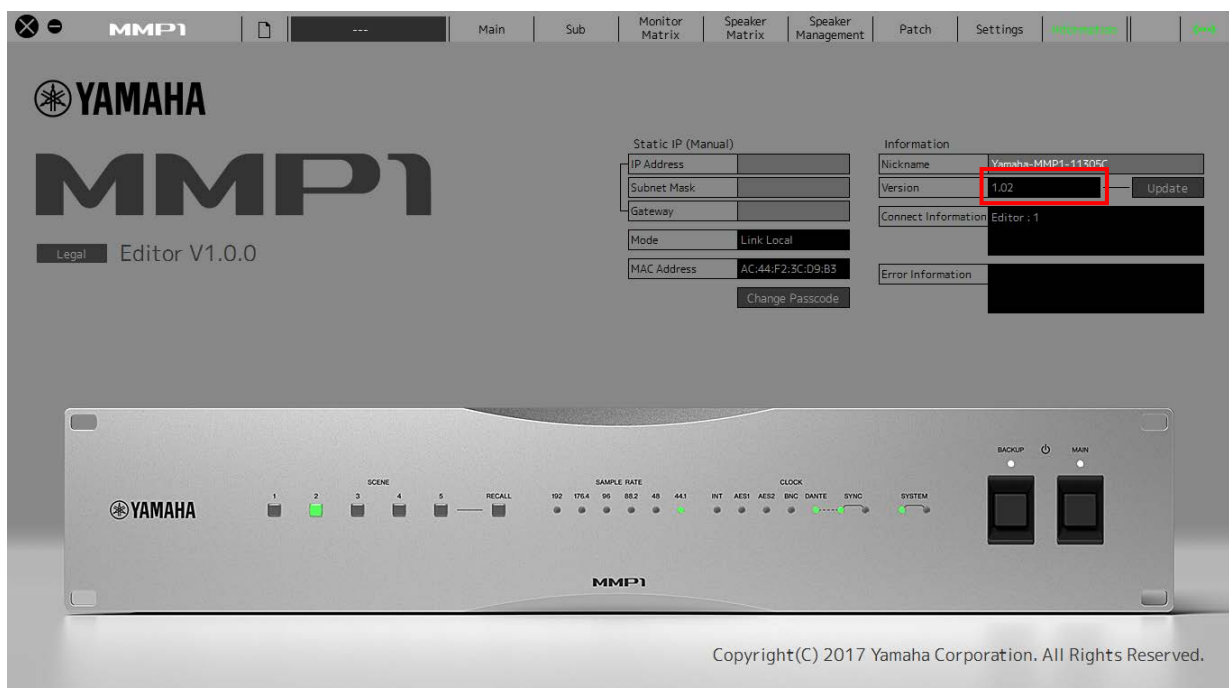
The update operation will begin.

An “Update has been completed.” is shown once update is completed.

**8. Reboot the MMP1, then connect from the MMP1 Editor with the “Editor → MMP1” option.**

If you accidentally connect with “CONNECT (MMP 1 → Editor),” open the file saved in step 5 and connect again with “CONNECT (Editor → MMP 1).”

**9. Confirm that the firmware version has been updated on the Information screen.**



The firmware update is now complete.

## ■ TCP/IP settings of computer

Before you update the Dante firmware, you must change your computer's TCP/IP settings. After updating the firmware, return the TCP/IP settings to their original settings.

### Windows

#### 1. Open the “Network and Sharing Center” as described below.

##### Windows 7

Select [Start] → [Control Panel], then click or double-click [Network and Sharing Center] or [View network status and tasks].

##### Windows 8.1 and Windows 10

Right-click [Start] → [Control Panel], then click or double-click [Network and Sharing Center] or [View network status and tasks].

The “Network and Sharing Center” is displayed.

#### 2. Click [Manage network connection] or [Change Adapter settings] from the “Tasks” list located in the left side of “Network and Sharing Center” window, then double-click [Local Area Connection].

The “Local Area Connection Status” dialog box will be displayed.

##### NOTE

- The “User Account Control” dialog box may appear. Click [Continue] or [Yes].
- If the “Local Area Connection properties” dialog box appears, skip ahead to step 4.

#### 3. Click [Properties].

The “Local Area Connection properties” dialog box will be displayed.

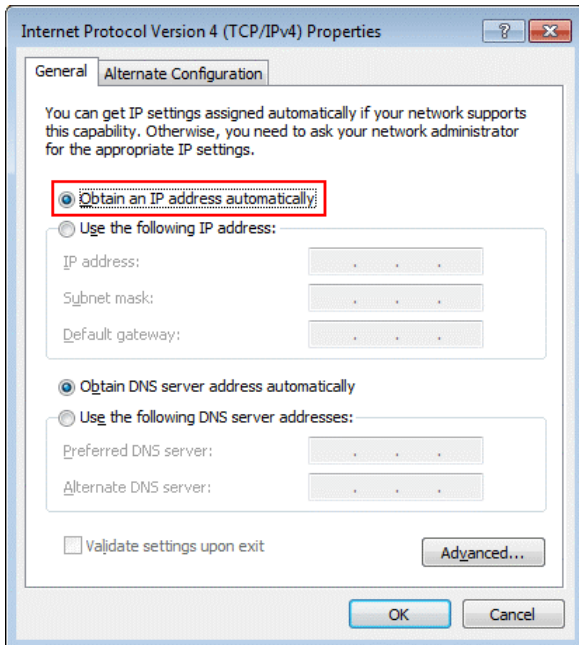
##### NOTE

The “User Account Control” dialog box may appear. Click [Continue] or [Yes].

**4. Select [Internet Protocol Version 4 (TCP/IPv4)], then click [Properties].**

The “Internet Protocol Version 4(TCP/IPv4) Properties” dialog box will be displayed.

**5. Click [Obtain an IP address automatically].**



**6. Click [OK].**

## Mac

**1. Click [System Preferences] → [Network].**

The “Network” dialog box will be displayed.

**2. Click the service that you want to connect to the device.**

If you're using the Ethernet port that's built into the Mac, click [Ethernet].

**3. In “Configure IPv4,” choose [Using DHCP].**

**4. Click [Apply] button, then close “Network” dialog box.**

## ■ Install the Dante Firmware Update Manager

Before you update the Dante firmware, you must install the Dante Firmware Update Manager.

Dante Firmware Update Manager installer is contained in the same compressed file as MMP1 firmware.

Windows: DanteFirmwareUpdateManager-**x.x.x.x**\_windows.exe

Mac: DanteFirmwareUpdateManager-**x.x.x.x**\_osx.dmg

**x.x.x.x** represent the version number of the Dante Firmware Update Manager.

Double-click the Dante Firmware Update Manager installer and follow the on-screen instructions to install the firmware.

### NOTE

- The Dante firmware does not operate normally if its path contains any multi-byte character (including Japanese characters). If you use a directory name containing any multi-byte character in your computer, store the firmware update files in a directory that consists only of ASCII characters (e.g. C:\temp).
- When installing the Dante Firmware Update Manager, temporarily disable any running anti-virus software.
- The “User Account Control” dialog box or the “Windows Security” dialog box may appear. In such case, click [Install this driver software anyway].
- In the middle of installation of the Dante Firmware Update Manager, you may be prompted to install Bonjour. In such case, download the Bonjour installer from the URL presented by the installer and install it.



- You may be prompted to restart the computer after the installation is complete. Before proceeding to update, restart the computer.

## ■ Updating the Dante firmware

Described below are the procedures to update the Dante module firmware integrated in the MMP1 device.

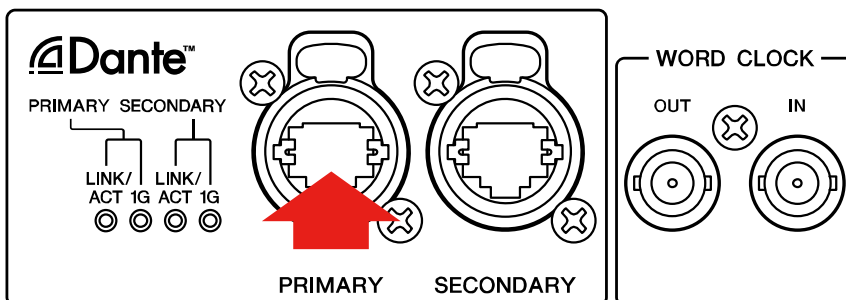
When Dante firmware needs to be updated, execute the following procedures.

### NOTE

- For details of the Dante Firmware Update Manager, refer to “AUD-MAN-Firmware Update Manager” stored in the compressed file folder.

#### 1. Connect the Dante [PRIMARY] connector on the rear panel of the MMP1 device to the Ethernet connector on the computer using an Ethernet cable.

Be sure to directly connect the computer and the MMP1 device, and do not connect any other Dante device to the computer.



#### 2. Start up the Dante Firmware Update Manager as follows.

##### Windows

Select “All programs” or “All apps” → “Audinate” → “Dante Firmware Update Manager” → “Dante Firmware Update Manager.”

##### Mac

Double-click “Applications” → “Dante Firmware Update Manager.”

## NOTE

- Check in the title bar that the version number is 1.3.2 or higher.
- The “User Account Control” dialog box may appear. Click [Continue] or [Yes].

### 3. Click [Update Dante Firmware].

### 4. Click [Browse] and select “FWUpdate\_MMP1\_vxxx\_swyyy.dnt.” Then click [Open].

xxx and yyy represent the firmware version number.

## NOTE

The Dante firmware does not operate normally if its path contains any multi-byte character (including Japanese characters). If you use a directory name containing any multi-byte character in your computer, store the firmware update files in a directory that consists only of ASCII characters (e.g. C:\temp).

## NOTICE

Be sure to ensure compatibility of the update files with MMP1. If update files other than MMP1 are applied, the device will become inoperable. In general, do not check the [Override Device Matching] option. If this option is left unchecked, only devices that support the file can be selected, ensuring that updating the device with invalid or wrong files is prevented.

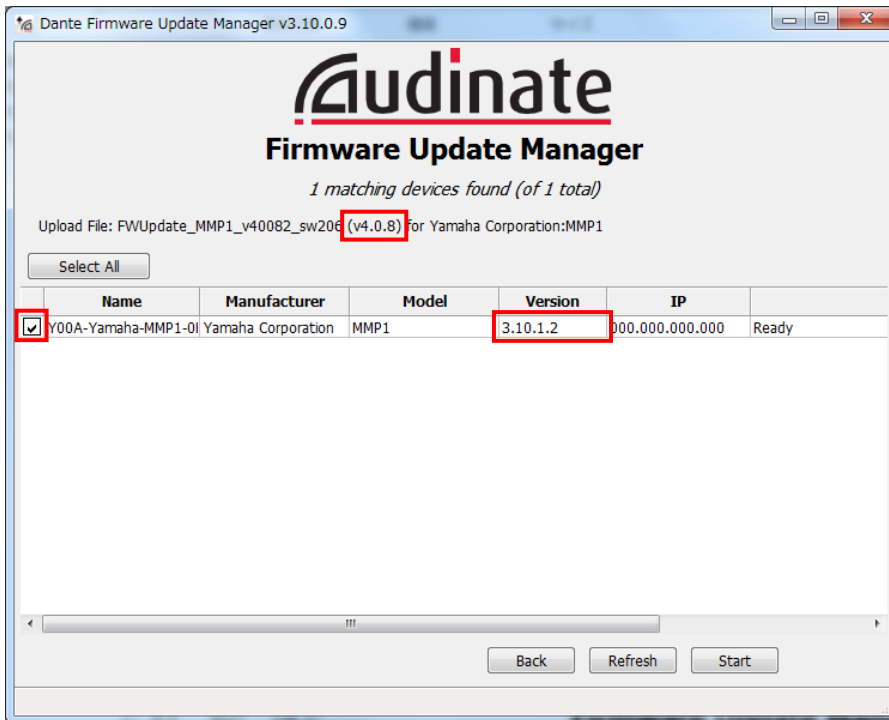
### 5. Click [Next].

## NOTE

Dante Firmware Update Manager may be blocked by the Windows Firewall. Select the [Private Network] checkbox and click [Allow access].

## 6. Check the MMP1 to update.

Check the version of the update files and the version number indicated in the MMP1 line.



### NOTE

If the MMP1 is not indicated, click [Refresh]. If it is still not indicated after that, the computer and the MMP1 are not connected properly. Check that the cable is not loose or disconnected, TCP/IP is properly configured, and the MMP1 is powered on.

## 7. Click [Start].

The update operation will begin.

“Updating(n/m)” appears in the Status field during updating. “Done” is displayed once update is completed.

### NOTICE

Update takes 2 to 4 minutes. During the update operation, do not turn off the power to the device or disconnect the cable. If update fails due to

disconnection of the power cable during the update, or due to other reasons, the device may become inoperative.

#### **NOTE**

If update is not completed after 5 minutes, or update failure indication appears, exit the Dante Firmware Update Manager program without turning the MMP1 power off, and restart the procedure from the step 4. If update still fails, follow the instructions stated in “About Failsafe Mode” to perform the recovery processing.

#### **8. Restart the MMP1.**

The firmware update is now complete.

## ■ About Failsafe Mode

During normal operation, software must be loaded from a flash memory drive during operations to use the Dante module integrated in the MMP1. However, data in a flash memory drive may occasionally become corrupted, as with any other storage device.

In many cases, such data corruption is caused by turning the MMP1 power off during firmware upgrading.

The Dante module has a specially protected flash drive section in order to recover from such a condition. When the main section is damaged, the program stored in the protected area is activated and the Dante module goes into “failsafe mode.”

To restore the Dante module in failsafe mode, a recovery image needs to be sent from the Firmware Update Manager.

To check if the Dante module is in failsafe mode, use Dante Controller: the respective device is displayed in red in the network grid view of the Dante Controller (version 3.1.x or higher).

Described below are the procedures to recover the Dante module integrated in the MMP1 device.

- 1. Turn off the power to the computer and the MMP1.**
- 2. Separate the MMP1 from the Dante network.**
- 3. Connect the Dante [PRIMARY] connector on the rear panel of the MMP1 device to the Ethernet connector on the computer using an Ethernet cable.**
- 4. Turn the computer power on and login with administrative privileges.**
- 5. Turn on the power to the MMP1.**
- 6. Start up the Dante Firmware Update Manager as follows.**

## **Windows**

Select “All programs” or “All apps” → “Audinate” → “Dante Firmware Update Manager” → “Dante Firmware Update Manager.”

## **Mac**

Double-click “Applications” → “Dante Firmware Update Manager.”

## **NOTE**

The “User Account Control” dialog box may appear. Click [Continue] or [Yes].

**7. Click [Failsafe Recovery].**

**8. Check the detected MMP1.**


**9. Click [Start].**

The recovery operation will begin.

**10. When the “Recovery image loaded” dialog box appears, click [OK].**

**11. Exit the Dante Firmware Update Manager, and wait for two minutes before turning off the power to the MMP1.**

**12. The correct Dante firmware now needs to be loaded.**

Follow steps 2 through 8 described in “ Updating the Dante firmware.”

Now recovery and firmware update are completed.