

Device License Activation Guide

EN

Introduction

This guide is intended for users who wish to expand the functionality of their Yamaha audio devices. It explains how to activate a Device License for those devices.

The following steps are required to activate a Device License:

- Register an account using ProVisionaire Cloud.
- Register a Device License Code with your organization using ProVisionaire Cloud.
- Activate a Device License for the device using the ProVisionaire Portal app.

**You can manage Device Licenses using ProVisionaire Cloud.
ProVisionaire Cloud is a cloud service for Yamaha audio devices.**

Table of Contents

Introduction.....	1
■ Notice regarding the content.....	2
Registering an account using ProVisionaire Cloud	2
Registering a Device License Code with your organization using ProVisionaire Cloud	5
Activating a Device License for the device using the ProVisionaire Portal app.....	8
Deactivating a Device License	14

■ Notice regarding the content

The precautions and other matters are classified as follows.

NOTICE

Indicates points that you must observe in order to prevent data loss.

NOTE

Indicates notes on instructions, restrictions on functions, and additional information that may be helpful.

- The illustrations and screens as shown in this manual are for instructional purposes only.
- App Store is a trademark of Apple Inc. registered in the United States and other countries.
- Google Play is a trademark of Google LLC.
- "QR Code" is a registered trademark of DENSO WAVE INCORPORATED.
- The company names and product names in this manual are the trademarks or registered trademarks of their respective companies.
- Software may be revised and updated without prior notice.

Yamaha cannot be held responsible for data that is lost or destroyed.

Registering an account using ProVisionaire Cloud

1. Access the following URL:

<https://provisionaire.yamaha.com>

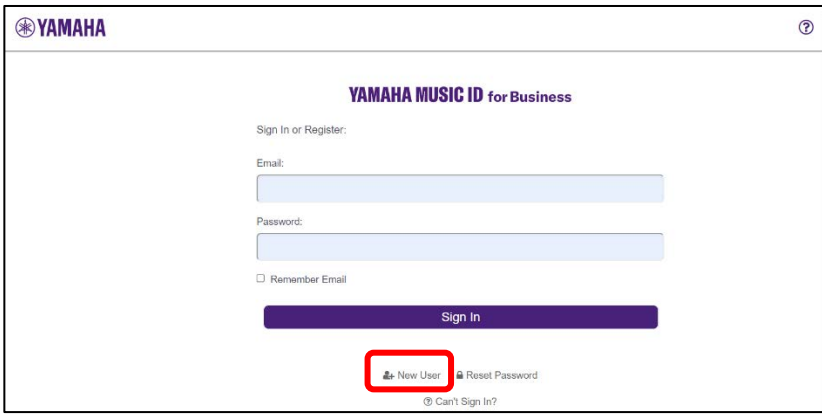
The Sign In screen for ProVisionaire Cloud opens.

2. Click [Sign In].



The Sign In screen for Yamaha Music ID for Business opens.

3. Click [New User].



NOTE

- Yamaha Music ID for Business is a common ID that can be used for corporations and sole-proprietor businesses that is provided by Yamaha Corporation and its group companies.
- You will use your account for Yamaha Music ID for Business to sign in to ProVisionaire Cloud.

4. Follow the steps described in the FAQ section that can be accessed through the following URL to register an account for Yamaha Music ID for Business.

https://business.member.yamaha.com/ww/faq/index.html?lcl=en_WW

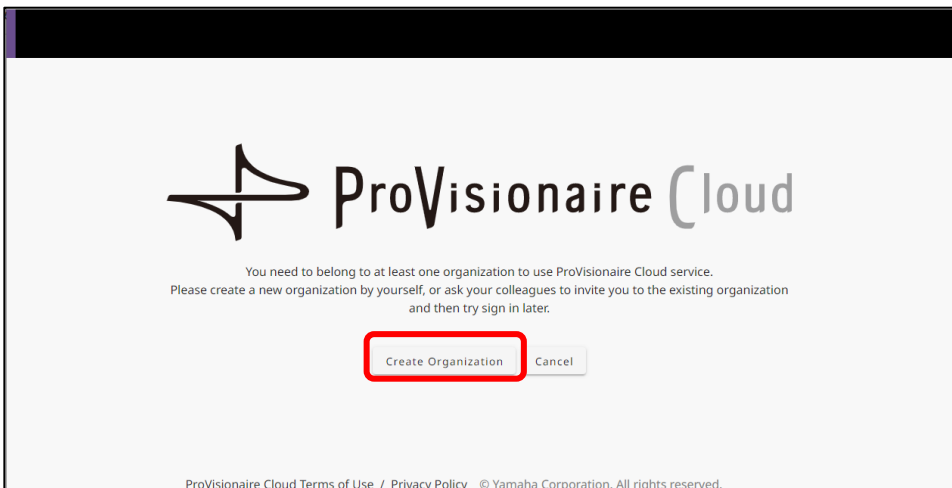
NOTE

Enter the email address at which you can receive email on your computer or smartphone that will be used to access ProVisionaire Cloud.

When you finish registering your account, a screen that enables you to create an Organization will open.

5. You must belong to at least one Organization to use ProVisionaire Cloud.

Click [Create Organization] to create your own organization and belong to it. Alternatively, cancel this process, then arrange to receive an invitation from the Owner or Manager of an Organization, and then sign in again using the invitation.



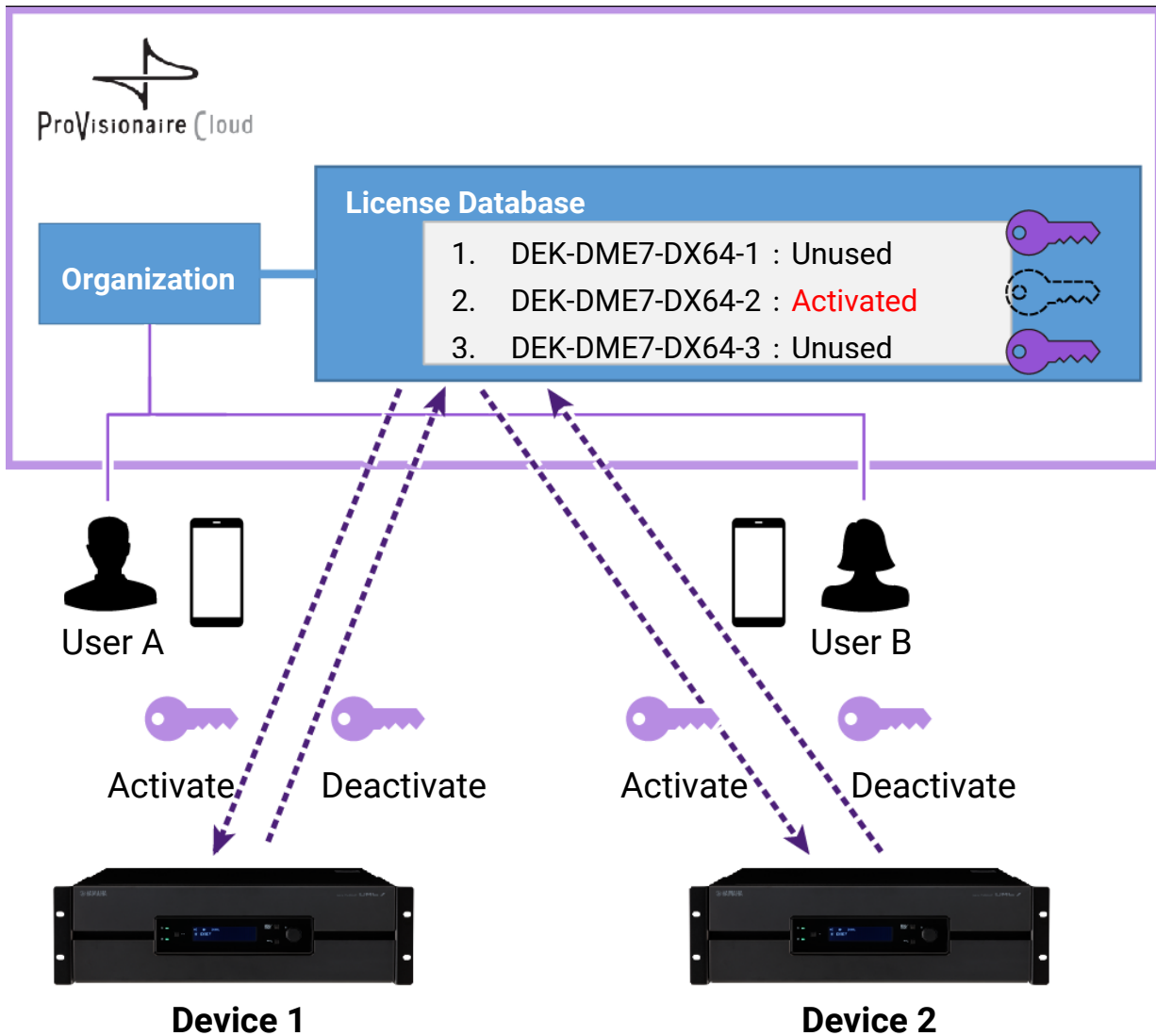
Refer to the following URL to learn about an Organization and a Role in an Organization, such as an Owner.

https://business.member.yamaha.com/ww/faq/index.html?lcl=en_WW

If you register a Device License using ProVisionaire Cloud, that Device License will be owned by the Organization. Any user who belongs to the same Organization can activate a Device License owned by the Organization regardless of their role in the Organization. For example, assume that both User A and User B belong to Organization XXX, and that User A has registered three Device Licenses with Organization XXX. In this case, User B will also be able to activate those Device Licenses.

NOTE

- You cannot activate one Device License for multiple devices simultaneously.
- There are two activation types available: [Activate Temporarily] and [Activate Permanently]. If you select [Activate Temporarily] and activate your Device License for a particular device, you will be able to deactivate (disable) the license later and activate it for another device.



NOTE

- If you create your own Organization, your role will be as an Owner.
- You can view your Role in the Organization to which you belong by clicking Account→[My Details]→[My Organizations].
- To invite a member to your Organization, click the Organization name→[My Organizations]→[Member] of My Organizations→[Invite Member]. Then enter the email address of the member you wish to invite (the email address that was entered during account registration), then select the Role you wish to assign to them. Then click [Send Invitation] to send the invitation.

Refer to the following URL to learn about an Organization and a Role in an Organization, such as an Owner.

https://business.member.yamaha.com/ww/faq/index.html?lcl=en_WW

Registering a Device License Code with your organization using ProVisionaire Cloud

1. Sign in to ProVisionaire Cloud.

<https://provisionaire.yamaha.com>

2. Make sure that you see the name of Organization with which you wish to register a Device License.

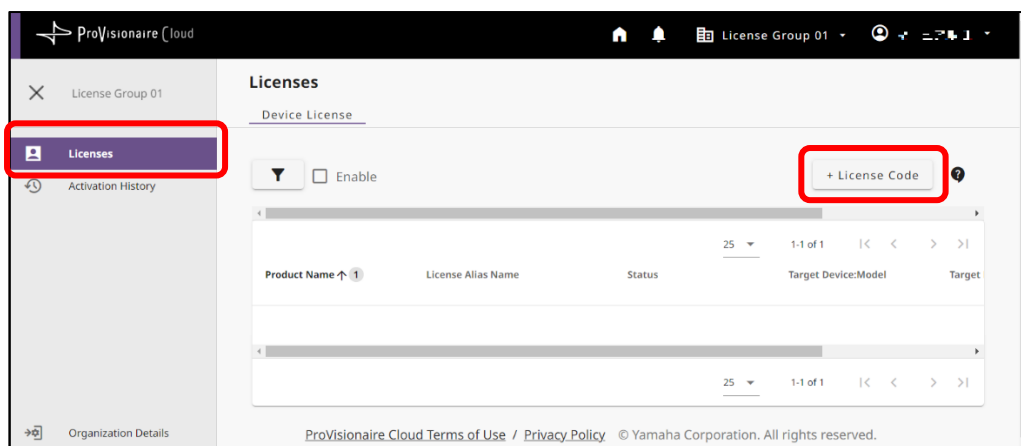
If you are planning to create a new Organization or select a different Organization, click the name of the Organization that you wish to create or select.



NOTICE

Once you register a Device License with the Organization, you will be unable to register it with another Organization. Please note that once you register a Device License with a different Organization by mistake, it is impossible to cancel the registration in any ways. In addition, you cannot integrate the Organization (with which you registered a Device License) into another Organization, or divide such Organization.

3. Select the [Licenses] menu, and then click [+ License Code].



4. Enter a 25-digit Code for the Device License that you wish to activate, and then click [Next].

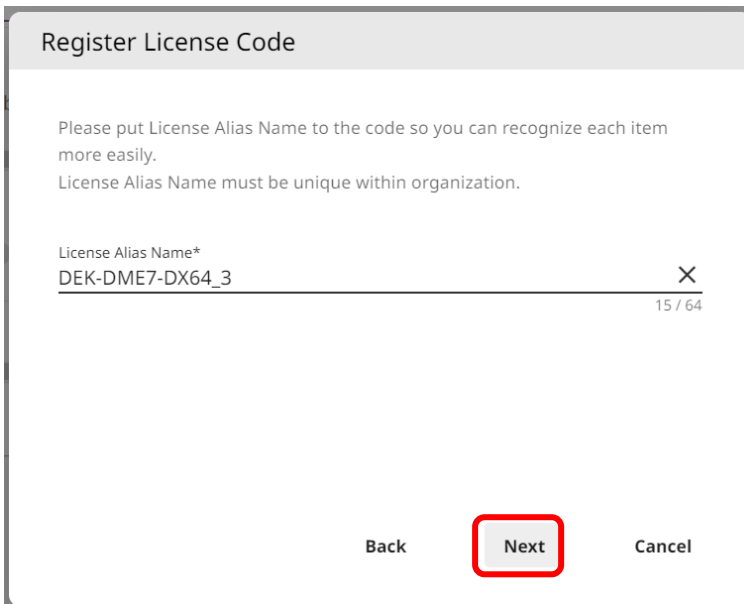
Register License Code

Please fill in the license code to be registered to your organization.

License Code*

Next Cancel

5. Enter a name for the Device License, and then click [Next].



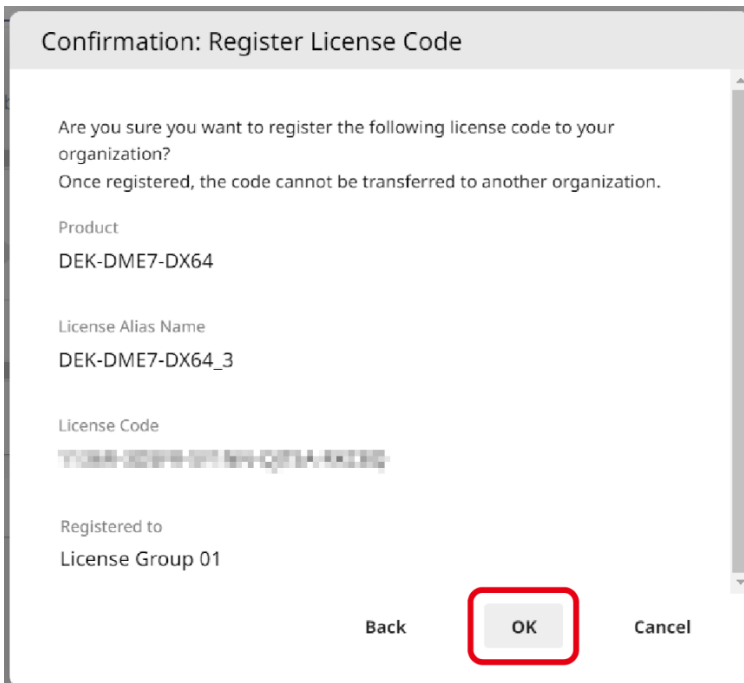
Register License Code

Please put License Alias Name to the code so you can recognize each item more easily.
License Alias Name must be unique within organization.

License Alias Name*
DEK-DME7-DX64_3 15 / 64

Back Next Cancel

6. Review the Device License information, and then click [OK].



Confirmation: Register License Code

Are you sure you want to register the following license code to your organization?
Once registered, the code cannot be transferred to another organization.

Product
DEK-DME7-DX64

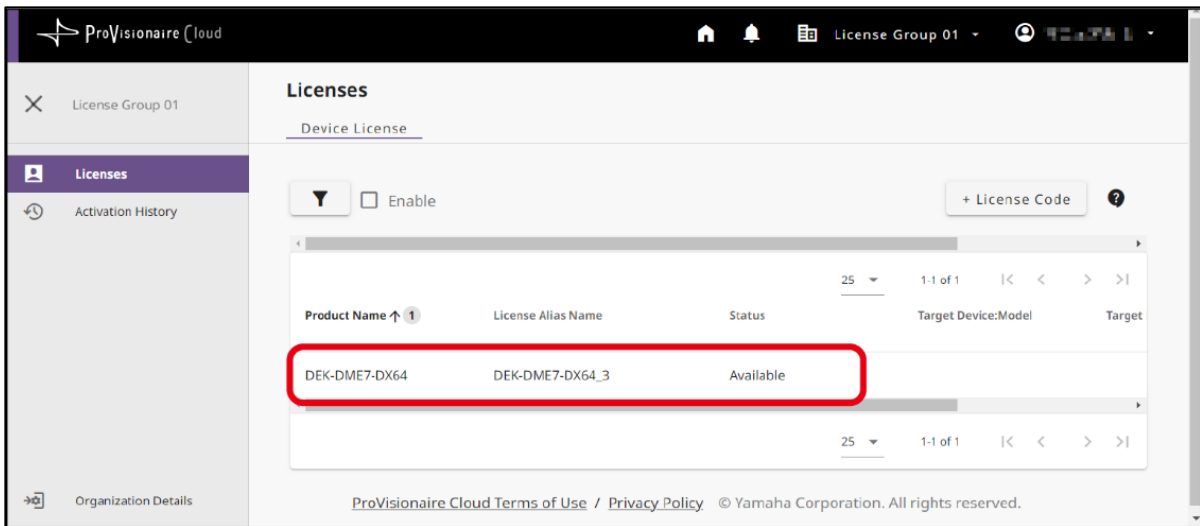
License Alias Name
DEK-DME7-DX64_3

License Code
XXXXXXXXXXXXXXXXXXXX

Registered to
License Group 01

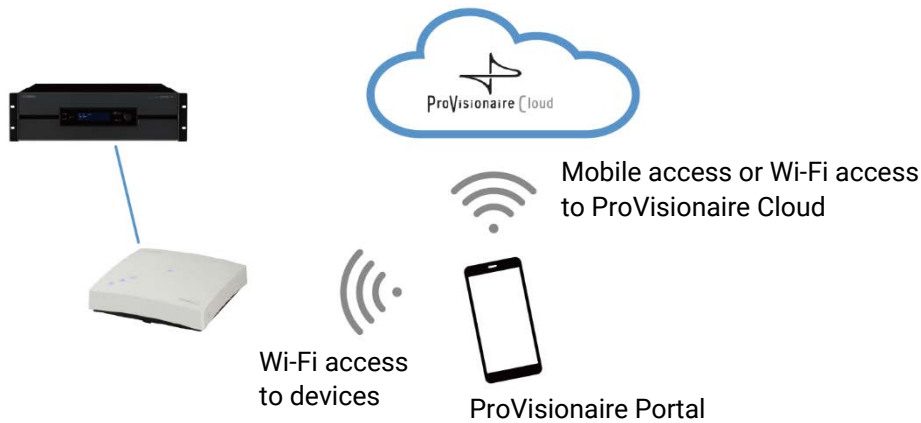
Back OK Cancel

7. If the name of Device License in question is displayed on the screen, registration of the Device License is complete.

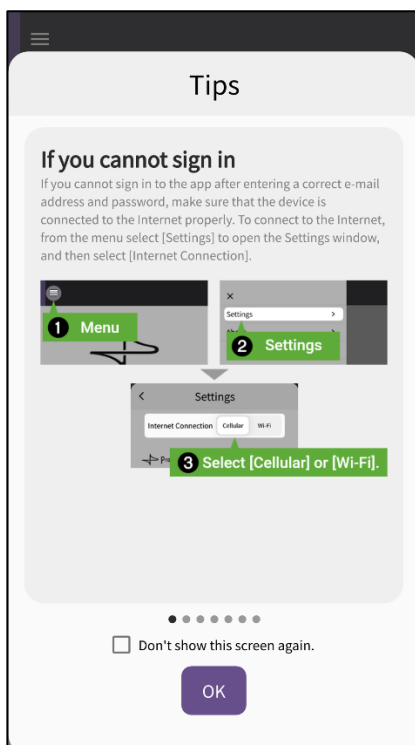


Activating a Device License for the device using the ProVisionaire Portal app

To activate a Device License, use the ProVisionaire Portal app. This app must be connected to both ProVisionaire Cloud and the device.



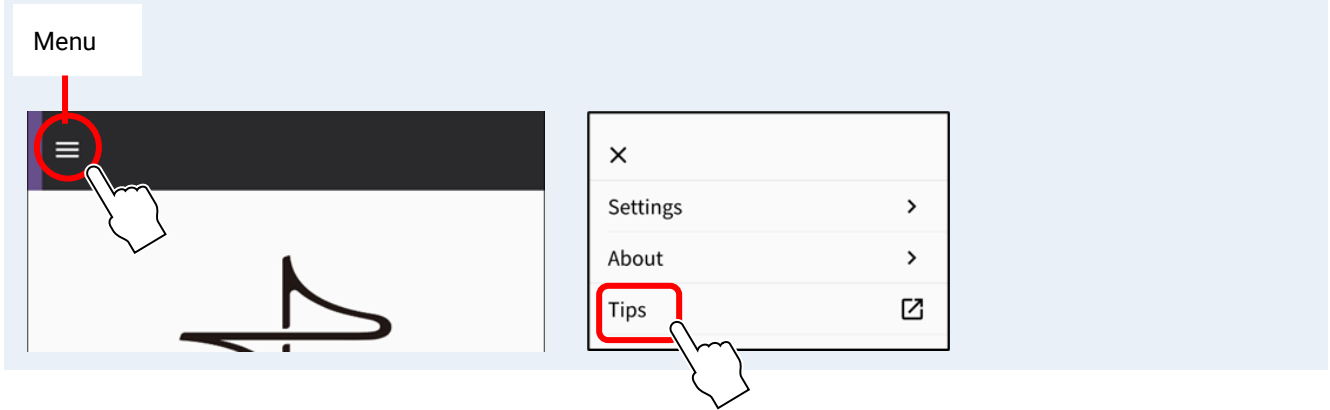
- 1. Install the ProVisionaire Portal app.**
Search the App Store or Google Play Store for the name of this app, and install it.
- 2. Open the ProVisionaire Portal app.**
The software license agreement will be displayed only the first time you launch the app. If you agree with the licensing terms, check the box, and then tap [Next].
- 3. Tips on how to use this app are displayed. You can swipe horizontally to view different tips.**
Tap the [OK] button to close the Tips window.



When you close the Tips window, the ProVisionaire Portal login screen will appear.

NOTE

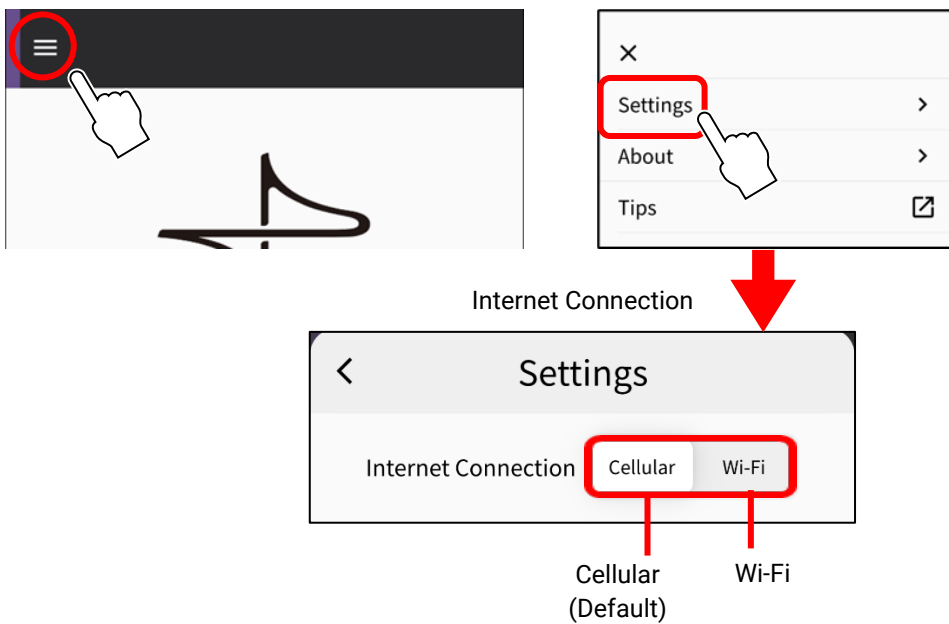
You can view the Tips again later: Menu → [Tips].



4. Turn on the Wi-Fi setting on your smartphone to allow the app to access your device via a Wi-Fi connection. Refer to your smartphone's manual for the appropriate Wi-Fi settings.

5. You can set the path for the app to communicate with ProVisionaire Cloud to [Cellular] or [Wi-Fi], depending on your connection environment.

Access the setting from the app menu → [Settings] → "Internet Connection."

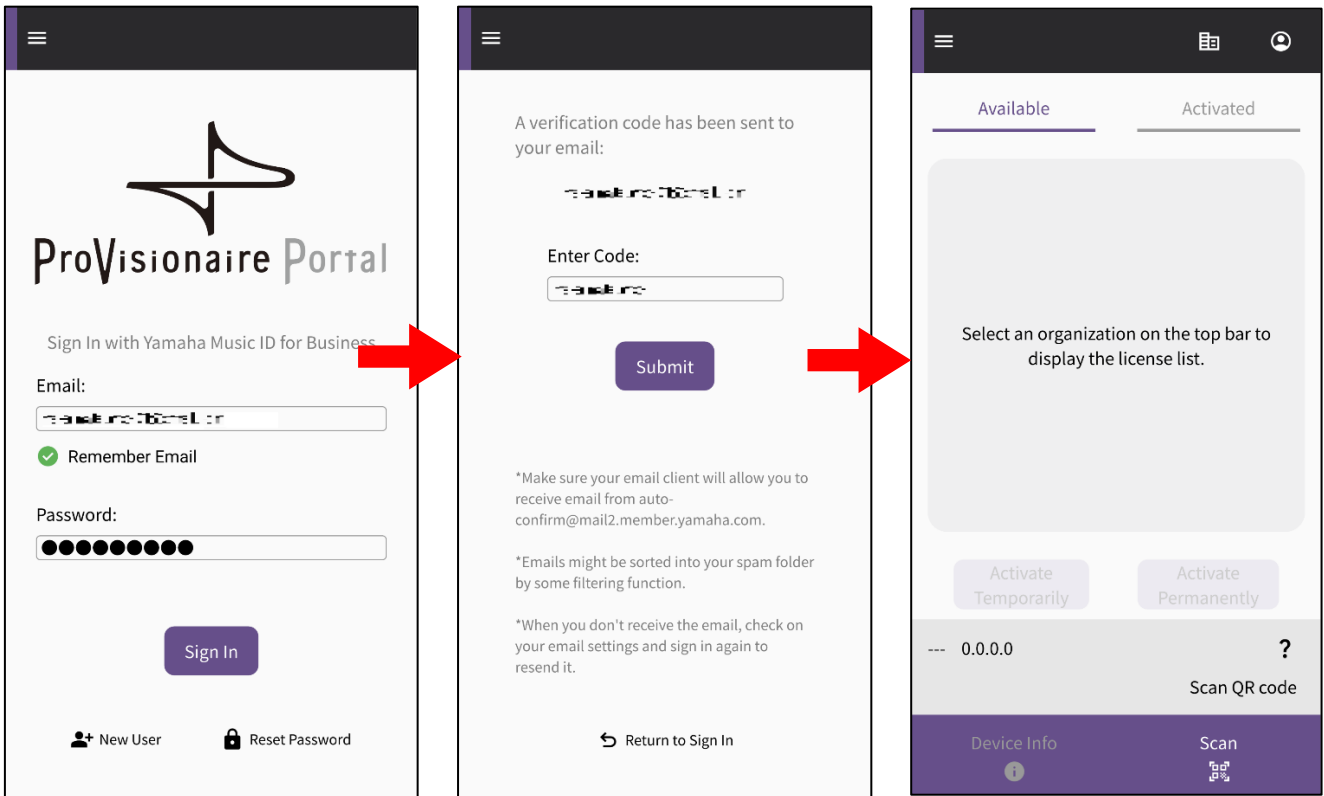


To avoid connection errors, we recommend that you use the default setting (Cellular) unless there is a particular reason to do otherwise. To switch to [Wi-Fi], the Wi-Fi network must be connected to the Internet.

NOTE

If an error message appears during subsequent operations, follow the instructions in the message to check the connection environment or the app's "Internet Connection."

- Enter the ID and password for ProVisionaire Cloud, and then tap [Sign In].
Enter the verification code on the next screen, and then tap [Submit].



NOTE

Signing-in requires a verification code, which will be sent to the email address you registered with ProVisionaire Cloud.

When you sign in, the home screen opens.

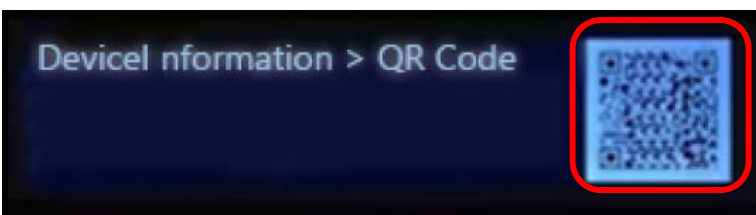
- Tap the Organization icon to display available Organization names. Select the Organization with which the Device License you wish to activate has been registered.



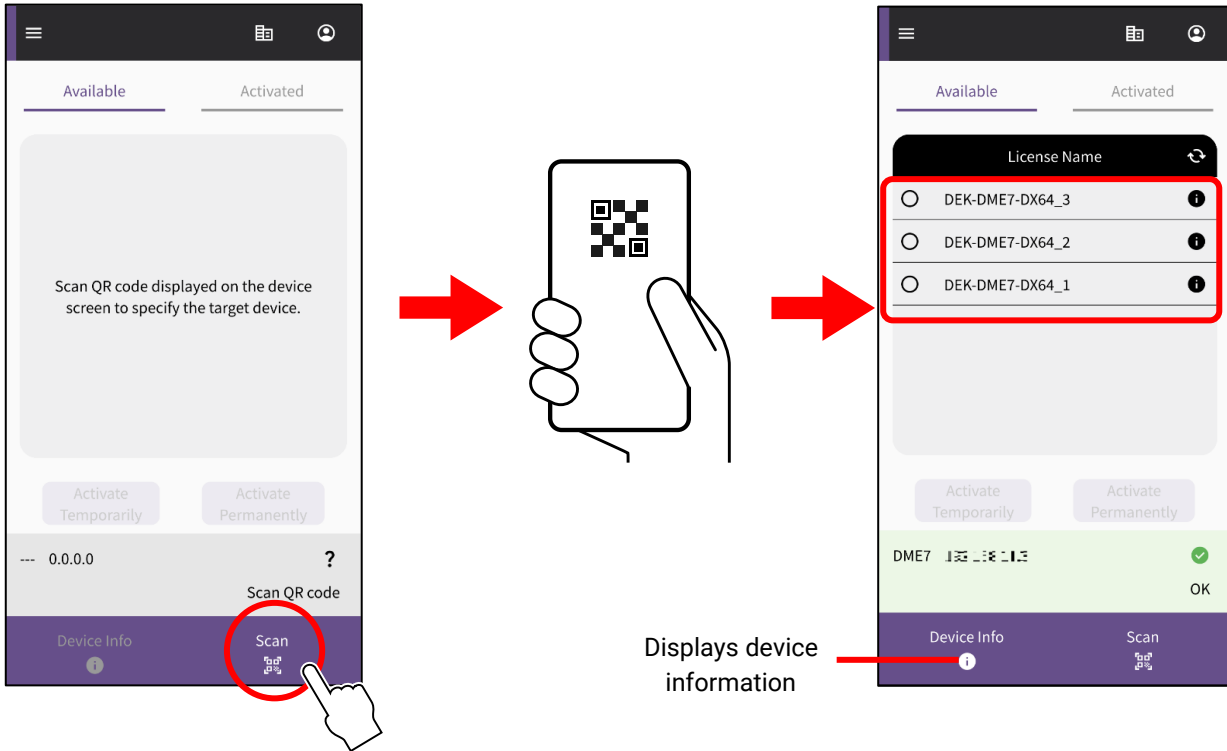
NOTICE

Be careful not to confuse organizations.

- Display a QR code on the screen of the device for which you wish to expand functionality. Refer to the user's manual for the device for more information on how to display the QR code.
(The following example illustrates a screen on the DME7.)

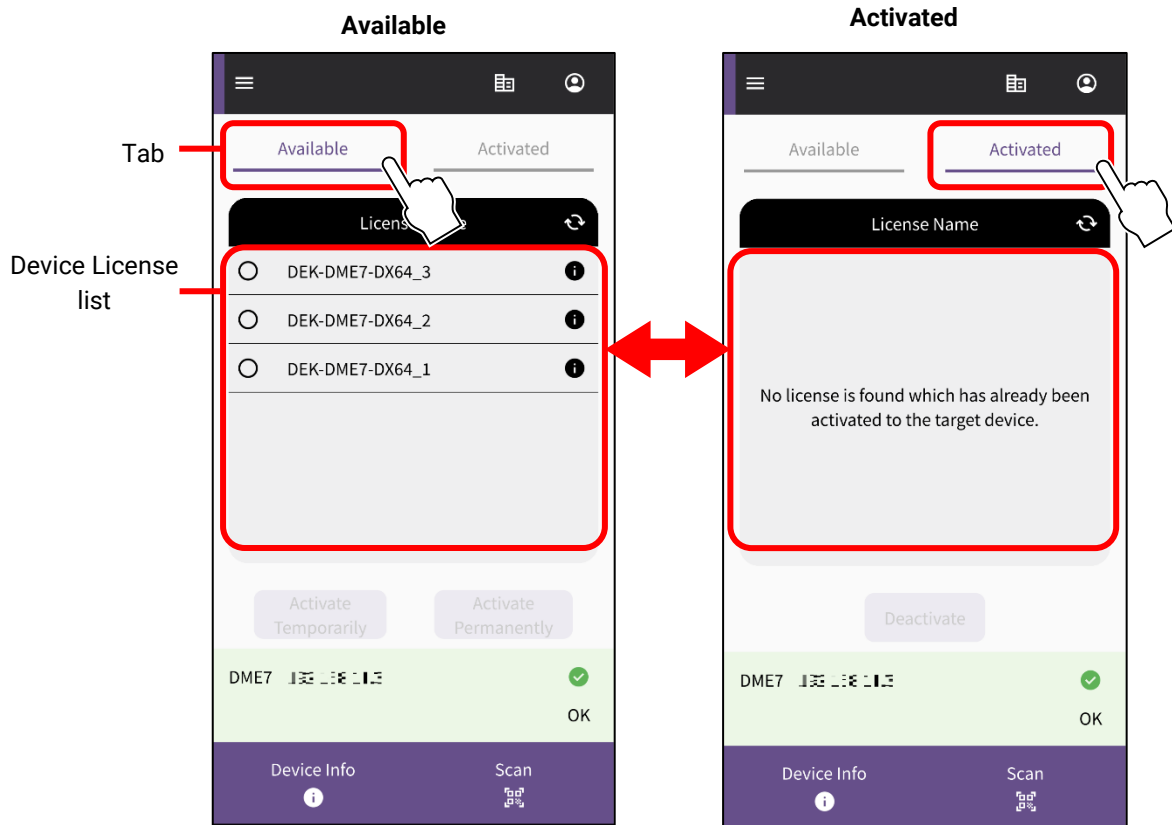


- Tap the scan button on the app screen. The QR code is now ready to be scanned. Focus your camera on the QR code through the app screen. The app retrieves device information, and displays a list of Device Licenses that can be activated.

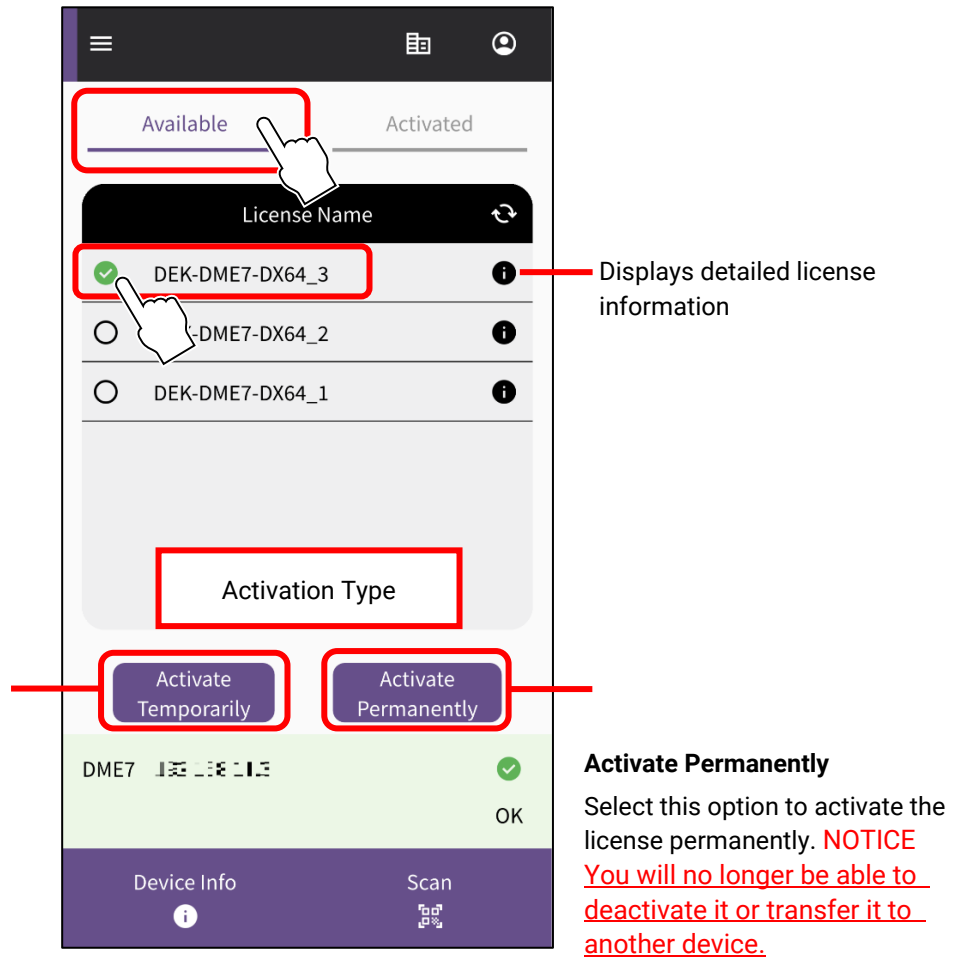


Toggle between two Device License lists

You can toggle between the list of Device Licenses that are available for activation and the list of Device Licenses that have already been activated for the target devices. Tap the tab on the screen or swipe horizontally.



10. On the [Available] tab, check the Device License that you wish to activate, and then select the desired activation type.

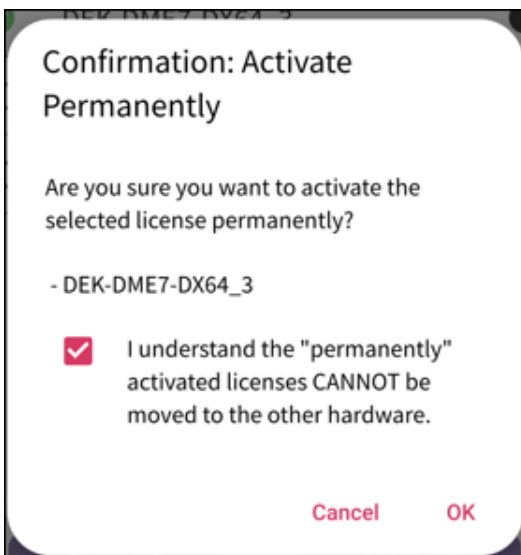


NOTE

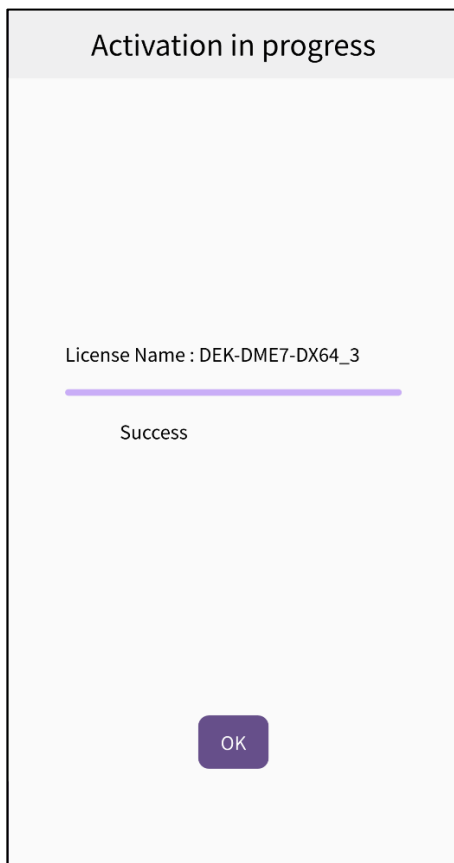
Only one Device License can be selected at a time. If you want to activate multiple Device Licenses, repeat the steps above for each Device License.

11. A confirmation screen appears. Review the contents and press [OK].
If you selected [Activate Permanently] in the previous step, make sure you understand that you will be unable to transfer it to another device in the future. Then press [OK].

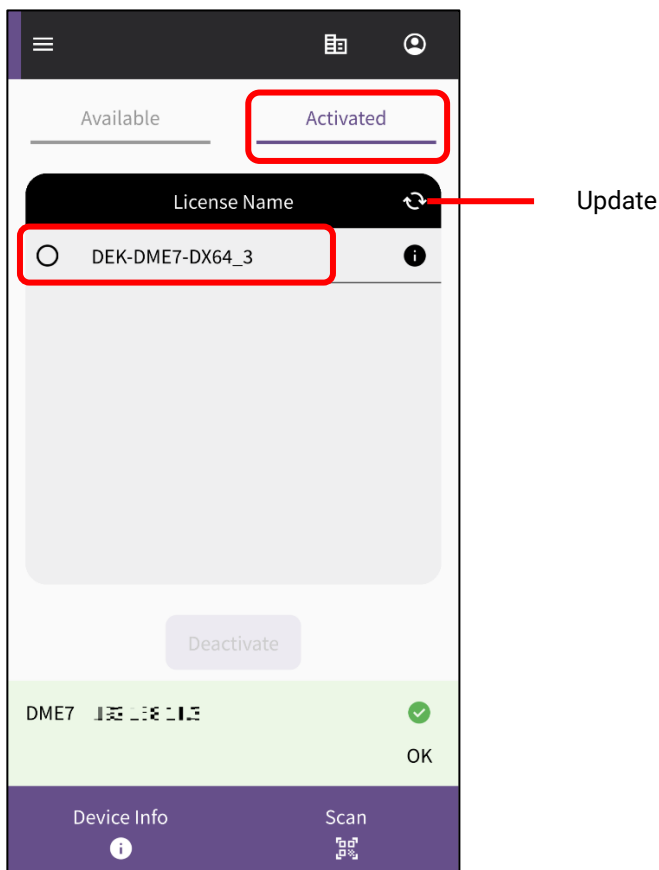
When you press [OK], activation starts.



12. When activation is complete, press the [OK] button.



13. You can confirm that the activation was successful by checking the [Activated] tab on the app screen, or by checking the [Activation History] menu on the ProVisionaire Cloud screen.



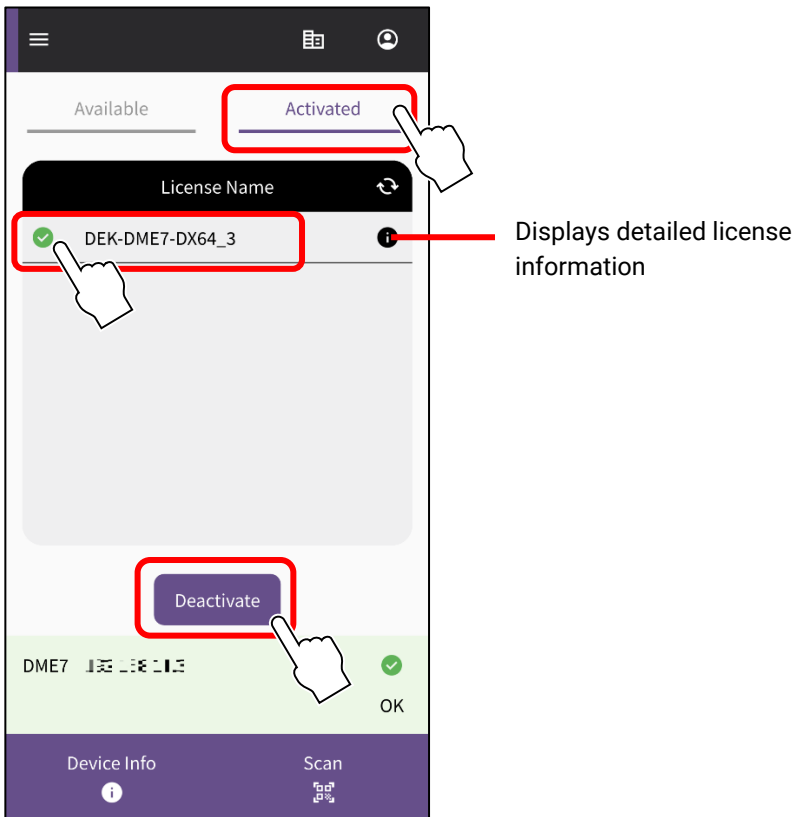
Deactivating a Device License

Once you deactivate a Device License, you will be able to activate that Device License for another device.

NOTE

If an error message is displayed during subsequent operation, please check the connection environment and the app's "Internet Connection" according to the message.

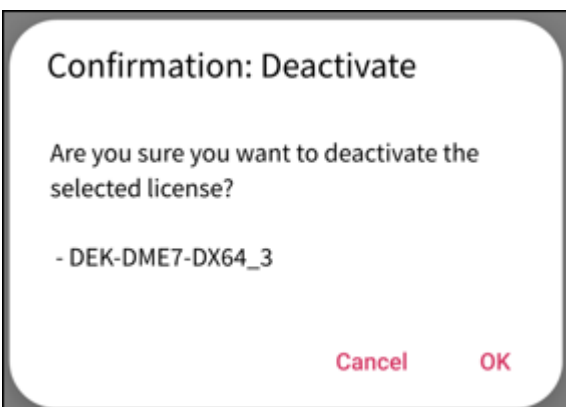
1. If you wish to deactivate a Device License, check the Device License that you wish to deactivate in the list on the [Activated] tab of the ProVisionaire Portal app, and tap [Deactivate].



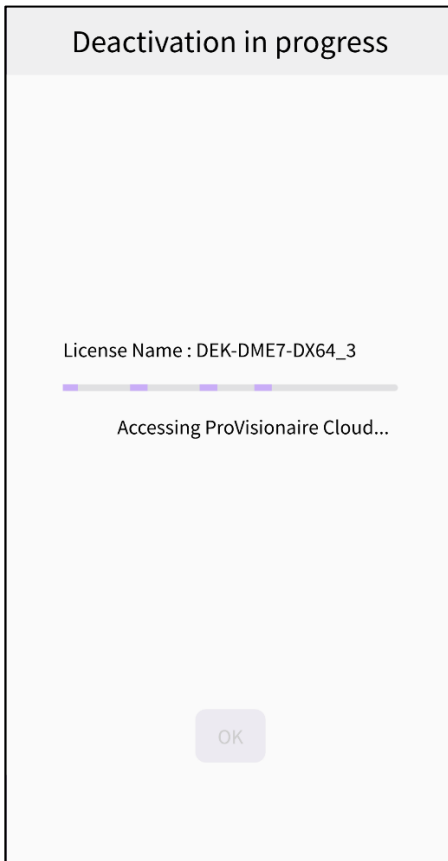
NOTE

- Only one Device License can be selected at a time. If you wish to deactivate multiple Device Licenses, repeat the steps above for each Device License.
- You cannot select a Device License for which the Activation Type was set to "Activate Permanently", because such Device Licenses cannot be deactivated. You can view the activation type by tapping the symbol for the license information.

2. When a confirmation screen appears, tap [OK] to deactivate the Device License.



Deactivation starts.



3. When deactivation is complete, press the [OK] button. You can confirm that the deactivation was successful by checking the [Activated] tab on the app screen, or by checking the [Activation History] menu on the ProVisionaire Cloud screen.

Yamaha Pro Audio global website
<https://www.yamahaproaudio.com/>
Yamaha Downloads
<https://download.yamaha.com/>